

## St. Joe/St. Maries Watershed Advisory Group Meeting

October 22, 2010  
St. Maries Fire Station



## Agenda

- Introductions
- Idaho's DRAFT 2010 Integrated Report
- Temperature TMDLs
  - St. Maries
  - St. Joe
- Open Discussion
- Future WAG meetings

## Introductions

- Tyson Clyne  
Watershed Coordinator  
Idaho Department of Environmental Quality

2110 Ironwood Parkway  
Coeur d'Alene, ID 83814

(208)769-1422  
Tyson.Clyne@deq.idaho.gov

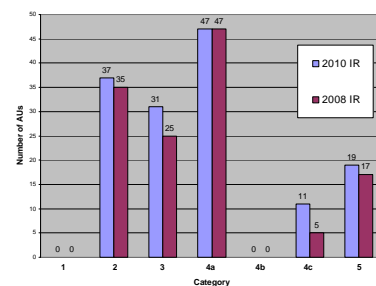
## Idaho's DRAFT 2010 Integrated Report

- Classifies the status of all Idaho surface water
  - Supporting beneficial uses
  - Not supporting beneficial uses
  - Not assessed
- Drives the development of TMDLs and state water quality endeavors

## Idaho's DRAFT 2010 Integrated Report

1. Supporting all BUs - AUs in wilderness or roadless areas
2. Attaining some BUs
3. Not assessed
4. Impaired waters
  - 4a. Waters with completed TMDL
  - 4b. Pollution control actions in place
  - 4c. Impaired by non-pollutant
5. Impaired waters needing a TMDL

## Idaho's DRAFT 2010 Integrated Report



## Idaho's DRAFT 2010 Integrated Report

- Section 5
  - Temperature – 13 AUs
  - Sediment – 1 AU
  - Macro invertebrate bio-assessment – 3 AUs
  - Bacteria – 2 AUs

19 pollutant/AU combinations needing TMDLs and/or further assessment

## Idaho's DRAFT 2010 Integrated Report

- Section 5 – Temperature



## Idaho's DRAFT 2010 Integrated Report

- Section 5 – Sediment



## Idaho's DRAFT 2010 Integrated Report

- Section 5 - Macro bio-assessment



## Idaho's DRAFT 2010 Integrated Report

- Section 5 – Bacteria



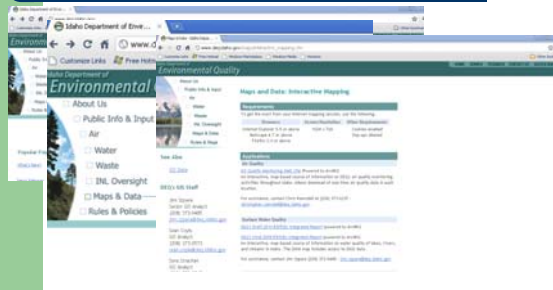
## Idaho's DRAFT 2010 Integrated Report

### Interactive map

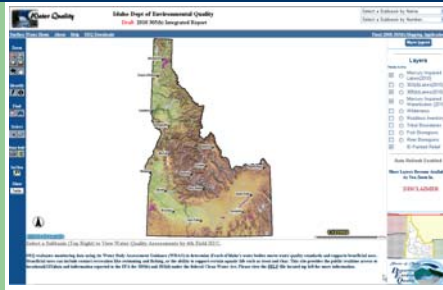
- <http://global.deq.idaho.gov/Website/wq2010/viewer.htm>

- Easy way to find status of stream
- See data used by DEQ in assessment

## Idaho's DRAFT 2010 Integrated Report



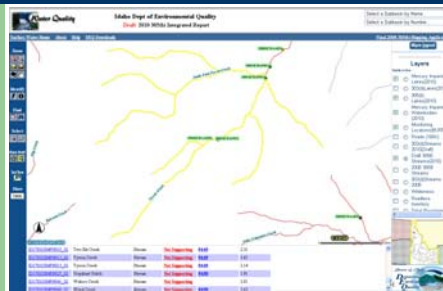
## Idaho's DRAFT 2010 Integrated Report



## Idaho's DRAFT 2010 Integrated Report



## Idaho's DRAFT 2010 Integrated Report



## Idaho's DRAFT 2010 Integrated Report

A screenshot of the Idaho Department of Environmental Quality website showing a table of monitoring results. The table is titled 'Monitoring Results for Reporting Period: 2008 - 2009' and contains columns for 'Station ID', 'Station Name', 'Parameter', 'Units', 'Value', and 'Status'. The table lists various monitoring stations and their corresponding data for the specified period.

## Idaho's DRAFT 2010 Integrated Report

- Open for public comment until  
– November 29, 2010

[http://www.deq.idaho.gov/Applications/NewsApp/showNews.cfm?news\\_id=3108&CFID=53817&CFTOKEN=15588398](http://www.deq.idaho.gov/Applications/NewsApp/showNews.cfm?news_id=3108&CFID=53817&CFTOKEN=15588398)

## Temperature TMDL Update

- St. Maries
  - Draft to WAG in September
  - Comments to DEQ by November 19th
- St. Joe
  - In process

## Open Discussion

- Temperature TMDLs
- Water quality standards
- Beneficial uses
- TMDL 5-year review
- Integrated Report

## Formal WAG membership

- BAG approved formal WAG membership
  - October 14<sup>th</sup>
- Letter to DEQ Director Toni Hardesty
- St. Maries River Road 319

Interest Group	Participant
Land Management Agencies	Ken Ockfen – Idaho Dept. of Lands Mark Cottrell – Natural Res. Conservation Service Sherry Klaus – Benewah Soil and Water Con. District Mark Hagen – Idaho Soil Conservation Commission Tim Price <sup>2</sup> – US Forest Service Mike Stevenson – Bureau of Land Management
Timber	John Ougley – Forest Capital? Josh Bernard – Pottatch? Dale Dimico – Idaho Forest Owners Association
Environmental Interest	Pat Tyken-Collier – Friends of St. Maries River Wetlands
Local Interests	Norm Suenkel – City of St. Maries
Native American Tribe	Scott Fields – Coeur d'Alene Tribe
Water Based Recreation	Peg Carver
Livestock	Butch Klavanso
Local Government	Dean Johnson – Benewah Nat. Res. Team <sup>1</sup> Fred Angelen – City of St. Maries <sup>1</sup> John Sherman – Santa/Ferwood Water and Sewer <sup>3</sup>
Point Source Discharger	Dawn Kruger – Clarkia Water and Sewer
Mining	Ed Kok – Emerald Creek Garnet
Agriculture	Rod Halvorsen
Other	Ashley McFarland – University of Idaho Extension <sup>2</sup> Meghan Lumley – Anista Utilities <sup>2</sup>

## Future Meeting

- November 19<sup>th</sup>
  - St. Maries Fire Station, 9-11am
- WAG webpage:
  - [http://www.deq.idaho.gov/about/regions/st\\_joe\\_st\\_maries\\_river\\_wag/index.cfm](http://www.deq.idaho.gov/about/regions/st_joe_st_maries_river_wag/index.cfm)