

Pend Oreille Lake Tributaries Temperature Total Maximum Daily Loads:

Addendum to the Pend Oreille Lake Subbasin Assessment and TMDL



Department of Environmental Quality

November 2007

Pend Oreille Lake Tributaries Temperature TMDLs

November 2007

**Prepared by:
State Technical Services office
Department of Environmental Quality
1410 N. Hilton St.
Boise, ID 83706**

Acknowledgments

Cover photo (sub-reach 01DS of the Pack River Stream Channel Assessment) courtesy of Golder Associates, Inc.

Table of Contents

Acknowledgments..... i

Table of Contents..... ii

List of Tables..... iv

List of Figures xi

List of Appendices.....xii

Abbreviations, Acronyms, and Symbolsxiii

Executive Summary xv

 Subbasin at a Glance..... xv

 Key Findings xvii

 Public Input and Meetingsxix

5. Total Maximum Daily Loads..... 1

 5.1 In-stream Water Quality Targets..... 2

 Design Conditions..... 9

 Target Selection..... 9

 Monitoring Points 11

 5.2 Load Capacity 12

 5.3 Estimates of Existing Pollutant Loads 12

 5.4 Load Allocation 48

 Wasteload Allocation 51

 Margin of Safety..... 51

 Seasonal Variation..... 52

 Construction Storm Water and TMDL Waste Load Allocations 52

Construction Storm Water 52

The Construction General Permit (CGP)..... 52

Storm Water Pollution Prevention Plan (SWPPP)..... 52

Construction Storm Water Requirements..... 52

 5.5 Implementation Strategies 53

 Time Frame 53

 Approach 53

 Responsible Parties..... 53

 Monitoring Strategy..... 54

 Pollutant Trading..... 54

Trading Components..... 54

Watershed specific Environmental Protection..... 54

Trading Framework 55

 5.6 Conclusions 55

References Cited 58
 GIS Coverages 60
 Other Related Documents 60

Glossary 61

Appendix A. Unit Conversion Chart 86

Appendix B. State and Site-Specific Standards and Criteria 88

Appendix C. Data Sources and Method Difference Loading Tables 90

Appendix D. Public Comments 114

Appendix E. Distribution List 115

Appendix X. System Potential Effective Shade for the Pend Oreille Basin 116

List of Tables

Table A. Streams and Pollutants for which TMDLs were Developed. xvii

Table B. Summary of Assessment Outcomes. xviii

Table 1. Bankfull Widths Estimated by Drainage Area and Existing Measurements. 6

Table 2. Shade Targets for Forest Group B Vegetation Type at Various Stream Widths..... 10

Table 3. Shade Targets for Forest Group C Vegetation Type at Various Stream Widths..... 10

Table 4. Shade Targets for Forest Group D Vegetation Type at Various Stream Widths..... 10

Table 5. Shade Targets for Nonforest Group 1 Vegetation Type at Various Stream Widths 11

Table 6. Shade Targets for Forest Group B Vegetation Type at Various Stream Widths..... 11

Table 7. Existing and Potential Solar Loads for the Pack River..... 14

Table 8. Existing and Potential Solar Loads for 1st West-side Pack River Tributary 15

Table 9. Existing and Potential Solar Loads for Beehive Creek. 15

Table 10. Existing and Potential Solar Loads for Slide Creek. 15

Table 11. Existing and Potential Solar Loads for Thor Creek. 16

Table 12. Existing and Potential Solar Loads for Zuni Creek. 16

Table 13. Existing and Potential Solar Loads for West Branch Creek. 16

Table 14. Existing and Potential Solar Loads for 1st West-side Pack River Tributary Below West Branch. 17

Table 15. Existing and Potential Solar Loads for 1st East-side Pack River Tributary Below West Branch. 17

Table 16. Existing and Potential Solar Loads for 2nd East-side Pack River Tributary Below West Branch. 17

Table 17. Existing and Potential Solar Loads for McCormick Creek. 17

Table 18. Existing and Potential Solar Loads for 1st Tributary to McCormick Creek..... 18

Table 19. Existing and Potential Solar Loads for 2nd Tributary to McCormick Creek..... 18

Table 20. Existing and Potential Solar Loads for Gunsight Creek, Tributary to McCormick Creek..... 18

Table 21. Existing and Potential Solar Loads for 4th Tributary to McCormick Creek..... 18

Table 22. Existing and Potential Solar Loads for 1st East-side Pack River Tributary Below McCormick Creek..... 19

Table 23. Existing and Potential Solar Loads for Torrent Creek. 19

Table 24. Existing and Potential Solar Loads for Zee Creek. 19

Table 25. Existing and Potential Solar Loads for Youngs Creek. 19

Table 26. Existing and Potential Solar Loads for Homestead Creek. 20

Table 27. Existing and Potential Solar Loads for 1st East-side Pack River Tributary Below Homestead Creek. 20

Table 28. Existing and Potential Solar Loads for 1st West-side Pack River Tributary Below Homestead Creek. 20

Table 29. Existing and Potential Solar Loads for 2nd East-side Pack River Tributary Below Homestead Creek. 20

Table 30. Existing and Potential Solar Loads for Jeru Creek..... 21

Table 31. Existing and Potential Solar Loads for the Forked Tributaries to Jeru Creek. 21

Table 32. Existing and Potential Solar Loads for Pearson Creek. 21

Table 33. Existing and Potential Solar Loads for Martin Creek..... 22

Table 34. Existing and Potential Solar Loads for Blane Creek. 22

Table 35. Existing and Potential Solar Loads for Lindsey Creek. 22

Table 36. Existing and Potential Solar Loads for Hellroaring Creek. 23

Table 37. Existing and Potential Solar Loads for the Forked Tributaries to Hellroaring Creek. 23

Table 38. Existing and Potential Solar Loads for 3rd Tributary to Hellroaring Creek. 24

Table 39. Existing and Potential Solar Loads for 4th Tributary to Hellroaring Creek. 24

Table 40. Existing and Potential Solar Loads for Grouse Creek. 25

Table 41. Existing and Potential Solar Loads for the North Fork Grouse Creek and its Tributaries. 26

Table 42. Existing and Potential Solar Loads for North Gold Creek. 26

Table 43. Existing and Potential Solar Loads for Rapid Lightning Creek. 27

Table 44. Existing and Potential Solar Loads for Trout Creek. 27

Table 45. Existing and Potential Solar Loads for Trestle Creek. 28

Table 46. Existing and Potential Solar Loads for Sand Creek. 28

Table 47. Existing and Potential Solar Loads for Granite Creek. 29

Table 48. Existing and Potential Solar Loads for Cedar Creek. 29

Table 49. Existing and Potential Solar Loads for ‘South’ Gold Creek. 30

Table 50. Existing and Potential Solar Loads for Upper Tributaries to Gold Creek. 30

Table 51. Existing and Potential Solar Loads for Chloride Gulch and Tributaries. 31

Table 52. Existing and Potential Solar Loads for West Gold Creek and Tributaries. 31

Table 53. Existing and Potential Solar Loads for Kick Bush and Cheer Creeks. 32

Table 54. Existing and Potential Solar Loads for Upper Cocolalla Creek. 33

Table 55. Existing and Potential Solar Loads for Fish Creek. 34

Table 56. Existing and Potential Solar Loads for Lower Cocolalla Creek. 34

Table 57. Existing and Potential Solar Loads for Hoodoo Creek. 35

Table 58. Excess Solar Loads and Percent Reductions for the Pack River and Upper Pack River Tributaries. (MD = Method Difference, explained in text) 49

Table 59. Excess Solar Loads and Percent Reductions for Lower Pack River Tributaries, Sand Creek, and Trestle Creek. (MD = Method Difference, explained in text) 50

Table 60. Excess Solar Loads and Percent Reductions for Lower Pend Oreille Tributaries. (MD = Method Difference, explained in text)..... 51

Table 61. Summary of assessment outcomes. 55

Table A-1. Metric - English unit conversions..... 87

Table C-1. Data sources for the Pend Oreille Lake Tributaries TMDLs..... 91

Table C-2. Method Difference (MD) Solar Loads for the Pack River. 92

Table C-3. Method Difference (MD) Solar Loads for 1st West-side Pack River Tributary. 93

Table C-4. Method Difference (MD) Solar Loads for Beehive Creek. 93

Table C-5. Method Difference (MD) Solar Loads for Slide Creek. 93

Table C-6. Method Difference (MD) Solar Loads for Thor Creek..... 94

Table C-7. Method Difference (MD) Solar Loads for Zuni Creek. 94

Table C-8. Method Difference (MD) Solar Loads for West Branch Creek. 94

Table C-9. Method Difference (MD) Solar Loads for 1st West-side Pack River Tributary Below West Branch..... 95

Table C-10. Method Difference (MD) Solar Loads for 1st East-side Pack River Tributary Below West Branch..... 95

Table C-11. Method Difference (MD) Solar Loads for 2nd East-side Pack River Tributary Below West Branch..... 95

Table C-12. Method Difference (MD) Solar Loads for McCormick Creek. 95

Table C-13. Method Difference (MD) Solar Loads for 1st Tributary to McCormick Creek. 96

Table C-14. Method Difference (MD) Solar Loads for 2nd Tributary to McCormick Creek. ... 96

Table C-15. Method Difference (MD) Solar Loads for Gunsight Creek, Tributary to McCormick Creek. 96

Table C-16. Method Difference (MD) Solar Loads for 4th Tributary to McCormick Creek. 96

Table C-17. Method Difference (MD) Solar Loads for 1st East-side Pack River Tributary Below McCormick Creek..... 97

Table C-18. Method Difference (MD) Solar Loads for Torrent Creek. 97

Table C-19. Method Difference (MD) Solar Loads for Zee Creek..... 97

Table C-20. Method Difference (MD) Solar Loads for Youngs Creek..... 97

Table C-21. Method Difference (MD) Solar Loads for Homestead Creek. 98

Table C-22. Method Difference (MD) Solar Loads for 1st East-side Pack River Tributary Below Homestead Creek. 98

Table C-23. Method Difference (MD) Solar Loads for 1st West-side Pack River Tributary Below Homestead Creek. 98

Table C-24. Method Difference (MD) Solar Loads for 2nd East-side Pack River Tributary Below Homestead Creek. 98

Table C-25. Method Difference (MD) Solar Loads for Jeru Creek. 99

Table C-26. Method Difference (MD) Solar Loads for the Forked Tributaries to Jeru Creek. 99

Table C-27. Method Difference (MD) Solar Loads for Pearson Creek. 99

Table C-28. Method Difference (MD) Solar Loads for Martin Creek..... 100

Table C-29. Method Difference (MD) Solar Loads for Blane Creek..... 100

Table C-30. Method Difference (MD) Solar Loads for Lindsey Creek. 100

Table C-31. Method Difference (MD) Solar Loads for Hellroaring Creek. 101

Table C-32. Method Difference (MD) Solar Loads for the Forked Tributaries to Hellroaring Creek..... 101

Table C-33. Method Difference (MD) Solar Loads for 3rd Tributary to Hellroaring Creek. .. 102

Table C-34. Method Difference (MD) Solar Loads for 4th Tributary to Hellroaring Creek.... 102

Table C-35. Method Difference (MD) Solar Loads for Grouse Creek. 103

Table C-36. Method Difference (MD) Solar Loads for the North Fork Grouse Creek and its Tributaries. 104

Table C-37. Method Difference (MD) Solar Loads for North Gold Creek..... 104

Table C-38. Method Difference (MD) Solar Loads for Rapid Lightning Creek. 105

Table C-39. Method Difference (MD) Solar Loads for Trout Creek..... 105

Table C-40. Method Difference (MD) Solar Loads for Trestle Creek. 106

Table C-41. Method Difference (MD) Solar Loads for Sand Creek..... 106

Table C-42. Method Difference (MD) Solar Loads for Granite Creek. 107

Table C-43. Method Difference (MD) Solar Loads for Cedar Creek. 107

Table C-44. Method Difference (MD) Solar Loads for ‘South’ Gold Creek. 108

Table C-45. Method Difference (MD) Solar Loads for Upper Tributaries to Gold Creek.... 108

Table C-46. Method Difference (MD) Solar Loads for Chloride Gulch and Tributaries..... 109

Table C-47. Method Difference (MD) Solar Loads for West Gold Creek and Tributaries. .. 110

Table C-48. Method Difference (MD) Solar Loads for Kick Bush and Cheer Creeks. 110

Table C-49. Method Difference (MD) Solar Loads for Upper Cocolalla Creek. 111

Table C-50. Method Difference (MD) Solar Loads for Fish Creek. 112

Table C-51. Method Difference (MD) Solar Loads for Lower Cocolalla Creek. 112

Table C-52. Method Difference (MD) Solar Loads for Hoodoo Creek. 113

List of Figures

Figure A. Subbasin at a Glance. xvi

Figure 1. Bankfull Width as a Function of Drainage Area 8

Figure 2. Target Shade for the Pend Oreille Subbasin. 36

Figure 3. Existing Shade Estimated for Pend Oreille Subbasin by Aerial Photo Interpretation.
..... 37

Figure 4. Lack of Shade (Difference Between Existing and Target) for the Pend Oreille
Subbasin. 38

Figure 5. Target Shade for the Upper Pack River..... 39

Figure 6. Existing Shade Estimated for the Upper Pack River by Aerial Photo Interpretation.
..... 40

Figure 7. Lack of Shade (Difference Between Existing and Target) for the Upper Pack River.
..... 41

Figure 8. Target Shade for the Lower Pack River..... 42

Figure 9. Existing Shade Estimated for the Lower Pack River by Aerial Photo Interpretation.
..... 43

Figure 10. Lack of Shade (Difference Between Existing and Target) for the Lower Pack
River..... 44

Figure 11. Target Shade for the Lower Pend Oreille Tributaries. 45

Figure 12. Existing Shade Estimated for the Lower Pend Oreille Tributaries by Aerial Photo
Interpretation. 46

Figure 13. Lack of Shade (Difference Between Existing and Target) for the Lower Pend
Oreille Tributaries..... 47

List of Appendices

Appendix A. Unit Conversion Chart	86
Appendix B. State and Site-Specific Standards and Criteria	88
Appendix C. Data Sources and Method Difference Loading Tables.....	90
Appendix D. Public Comments	114
Appendix E. Distribution List.....	115
Appendix X. System Potential Effective Shade for the Pend Oreille Basin	116

Abbreviations, Acronyms, and Symbols

§303(d)	Refers to section 303 subsection (d) of the Clean Water Act, or a list of impaired water bodies required by this section	IDWR	Idaho Department of Water Resources
AU	assessment unit	LA	load allocation
BMP	best management practice	LC	load capacity
BURP	Beneficial Use Reconnaissance Program	m	meter
C	Celsius	MD	method difference
CWA	Clean Water Act	mi	mile
CWE	cumulative watershed effects	mi²	square miles
DEQ	Department of Environmental Quality	MOS	margin of safety
EPA	United States Environmental Protection Agency	MWMT	maximum weekly maximum temperature
FPA	Idaho Forest Practices Act	n.a.	not applicable
FWS	U.S. Fish and Wildlife Service	NA	not assessed
GIS	Geographical Information Systems	NB	natural background
HUC	Hydrologic Unit Code	nd	no data (data not available)
I.C.	Idaho Code	NPDES	National Pollutant Discharge Elimination System
IDAPA	Refers to citations of Idaho administrative rules	PNV	potential natural vegetation
IDFG	Idaho Department of Fish and Game	SBA	subbasin assessment
IDL	Idaho Department of Lands	STATSGO	State Soil Geographic Database
		TMDL	total maximum daily load
		U.S.	United States
		U.S.C.	United States Code

USDA	United States Department of Agriculture
USDI	United States Department of the Interior
USFS	United States Forest Service
USGS Survey	United States Geological Survey
WAG	Watershed Advisory Group
WLA	wasteload allocation
WQLS	water quality limited segment
WQMP plan	water quality management plan
WQRP	water quality restoration plan
WQS	water quality standard

Executive Summary

The federal Clean Water Act (CWA) requires that states and tribes restore and maintain the chemical, physical, and biological integrity of the nation's waters. States and tribes, pursuant to Section 303 of the CWA, are to adopt water quality standards necessary to protect fish, shellfish, and wildlife while providing for recreation in and on the nation's waters whenever possible. Section 303(d) of the CWA establishes requirements for states and tribes to identify and prioritize water bodies that are water quality limited (i.e., water bodies that do not meet water quality standards). States and tribes must periodically publish a priority list (a "§303(d) list") of impaired waters. Currently this list must be published every two years. For waters identified on this list, states and tribes must develop a total maximum daily load (TMDL) for the pollutants, set at a level to achieve water quality standards.

This document addresses 19 water bodies in the Pend Oreille Lake Subbasin that have been placed on Idaho's current §303(d) list. This document only addresses the temperature TMDLs for these streams. For more information about these watersheds and the subbasin as a whole see the Clark Fork/Pend Oreille Subbasin Assessment and Total Maximum Daily Loads (IDEQ, 2001).

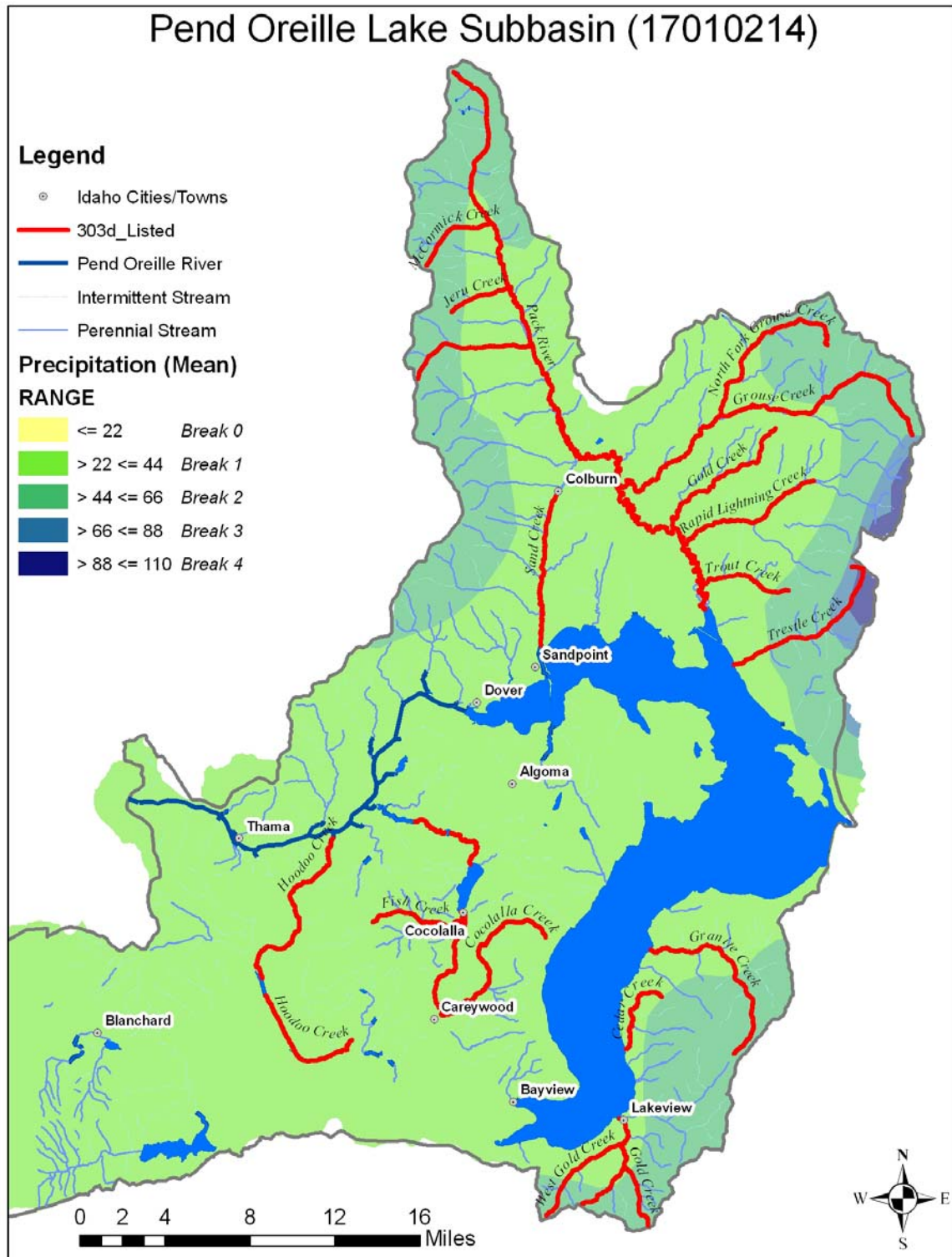
This TMDL analysis has been developed to comply with Idaho's TMDL schedule. The TMDL analysis quantifies pollutant sources and allocates responsibility for load reductions needed to return listed waters to a condition of meeting water quality standards.

Subbasin at a Glance

The Pend Oreille Lake Subbasin (17010214) is located in the northern Idaho panhandle. Listed on the Idaho 1998 303d list for temperature pollution were Hoodoo Creek, Cocolalla Creek, and Fish Creek. The Environmental Protection Agency (EPA) added streams to Idaho's 1998 303d list of impaired waters that exceeded Idaho's temperature criteria. In the Pend Oreille Lake Subbasin, Granite Creek, Grouse Creek, Pack River, and Trestle Creek were among those EPA additions (Figure A). A number of other streams were also examined in this analysis including those additional streams listed for temperature pollution on the Idaho 2002 303d list (Cedar Creek, Chloride Gulch Creek, 'South' Gold Creek, West Gold Creek, Hellroaring Creek, Jeru Creek, McCormick Creek, NF Grouse Creek, North Gold Creek, Rapid Lightning Creek, 'West' Sand Creek, and Trout Creek)*. Streams not listed but examined in this analysis were done so for the purpose of determining potential heat loading to listed segments.

* 'South' and 'West' are references to location for different streams having the same name.

Figure A. Subbasin at a Glance.



Key Findings

Nineteen water bodies were placed on the 1998 303d list of impaired waters by EPA for reasons associated with temperature criteria violations (Table A). Effective shade targets were established for these streams based on the concept of maximum shading under potential natural vegetation equals natural background temperature levels. Shade targets were actually derived from effective shade curves developed for similar vegetation types in the Northwest. Existing shade was determined from aerial photo interpretation field verified with solar pathfinder data.

Most streams examined in this TMDL had excess solar loads greater than that created by the Method Difference (difference between existing shade as a 10%-class interval and target shade as a unique integer). Notably, the Pack River and several of its larger tributaries (Grouse Creek, Rapid Lightning Creek, McCormick Creek, and Hellroaring Creek) had high excess loads with percent reductions needed to achieve target levels in the neighborhood of 30% to 90%. Hoodoo Creek and upper Cocolalla Creek also had high excess loads, however their percent reductions needed were generally less than 30%.

Several streams stood out as having excess loads less than what you would expect from having the existing shade at the same 10% class-interval as the target shade (Method Difference excess load). These streams (North Fork Grouse Creek and Granite Creek) are recommended for delisting from the 303d list for temperature (Table B).

Table A. Streams and Pollutants for which TMDLs were Developed.

Stream	Pollutant(s)
Hoodoo Creek	Temperature
Cocolalla Creek	Temperature
Fish Creek	Temperature
Granite Creek	Temperature
Grouse Creek	Temperature
Pack River	Temperature
Trestle Creek	Temperature
Cedar Creek	Temperature
'South' Gold Creek	Temperature
West Gold Creek	Temperature
Chloride Gulch Creek	Temperature
Hellroaring Creek	Temperature
Jeru Creek	Temperature
McCormick Creek	Temperature
NF Grouse Creek	Temperature
North Gold Creek	Temperature
Rapid Lightning Creek	Temperature
'West' Sand Creek	Temperature
Trout Creek	Temperature

Table B. Summary of Assessment Outcomes.

Water Body Segment/ AU	Pollutant	TMDL(s) Completed	Recommended Changes to §303(d) List	Justification
Pack River/ ID17010214PN031_04 ID17010214PN039_03 ID17010214PN039_04 ID17010214PN041_02 ID17010214PN041_03	Temperature	Yes	n.a.	Existing Shade
Rapid Lightning Creek/ ID17010214PN033_03	Temperature	Yes	n.a.	Existing Shade
North Gold Creek/ ID17010214PN034_02	Temperature	Yes	n.a.	Existing Shade
Grouse Creek/ ID17010214PN035_03 ID17010214PN036_02 ID17010214PN036_03	Temperature	Yes	n.a.	Existing Shade
NF Grouse Creek/ ID17010214PN037_02	Temperature	Yes	delist	Existing Shade
Trout Creek/ ID17010214PN032_02	Temperature	Yes	n.a.	Existing Shade
Hellroaring Creek/ ID17010214PN044_02	Temperature	Yes	n.a.	Existing Shade
Jeru Creek/ ID17010214PN043_02	Temperature	Yes	n.a.	Existing Shade
McCormick Creek/ ID17010214PN042_02	Temperature	Yes	n.a.	Existing Shade
Sand Creek/ ID17010214PN048_03 ID17010214PN049_02 ID17010214PN049_03	Temperature	Yes	n.a.	Existing Shade
Upper Cocolalla Creek/ ID17010214PN014_02 ID17010214PN014_03 ID17010214PN014_04	Temperature	Yes	n.a.	Existing Shade
Lower Cocolalla Creek/ ID17010214PN012_04	Temperature	Yes	n.a.	Existing Shade
Fish Creek/ ID17010214PN015_03	Temperature	Yes	n.a.	Existing Shade
Hoodoo Creek/ ID17010214PN003_02a ID17010214PN003_02	Temperature	Yes	n.a.	Existing Shade
Granite Creek/ ID17010214PN027_02 ID17010214PN027_03	Temperature	Yes	delist	Existing Shade
Cedar Creek/ ID17010214PN026_02	Temperature	Yes	n.a.	Existing Shade

'South' Gold Creek watershed (incls Chloride Gulch & West Gold)/ ID17010214PN021_02 ID17010214PN021_03 ID17010214PN022_02 ID17010214PN023_02 ID17010214PN023_03 ID17010214PN024_02	Temperature	Yes	n.a.	Existing Shade
Trestle Creek/ ID17010214PN030_02	Temperature	Yes	n.a.	Existing Shade

Public Input and Meetings

In compliance with Idaho Code §39-3611(8), the development of the Pend Oreille River TMDL included extensive public participation by the Pend Oreille River TMDL Watershed Advisory Group (WAG), the Pend Oreille River Tributary Work Group, and other interested parties. In October 2006, a Tributary Work Group was formed with the purpose to assist with the technical portion of the Pend Oreille River tributary TMDL development. The following is a summary of the public process.

WAG Meetings (relative to the Pend Oreille River tributary temperature TMDL)

October 20, 2005: topics covered were the specifics of the TMDL process for the Pend Oreille River in Idaho and Washington, the Memorandum of Agreement signed by the two states, the Kalispel Tribe and EPA to develop one TMDL for temperature, and the rolls and responsibilities of the WAG during TMDL development.

May 26, 2006: topics covered were approaches to the temperature TMDL by Washington and Idaho, the Pend Oreille River tributary TMDLs in both Idaho and Washington, and monitoring efforts by the Pend Oreille Conservation District and the Kalispel Tribe.

May 10, 2007: among topics covered was the role of the Idaho Tributary Work Group in the decision-making process.

June 25, 2007: the WAG formally gave authority to the Work Group to recommend tributary TMDLs (and to proceed with public comment on those TMDLs) to the panhandle Basin Advisory Group.

Tributary Work Group Meetings

October 26, 2006: topics covered were Tributary Work Group interaction with Pend Oreille River mainstem WAG, impaired water bodies in the subbasin, stressor identification reports for water bodies with "unknown" pollutants, and the sediment TMDL.

February 13, 2007: topics covered were sediment modeling results and the nutrient and temperature TMDL progress for the Pend Oreille River tributaries.

March 20, 2007: topics covered were the approach to the nutrient TMDL for the Lower Pack River and tributaries, the revised land use coverages and sediment model results.

May 23, 2007: topics covered were the approval process and interaction with Pend Oreille River mainstem WAG, regionally specific vegetation types and shade curves, and the potential natural vegetation (PNV) TMDLs.

June 14, 2007: topics covered were the revised sediment TMDL and allocations.

July 19, 2007: topics covered were the nutrient TMDL for the lower Pack River, sediment and temperature TMDLs, and impairments in Sand Creek.

Sept 18, 2007: topics covered were the release of the draft nutrient, temperature and sediment TMDLs released to the public and the meeting was opened up to answer questions by the public.

October 16, 2007: public comments received on the nutrient, temperature and sediment TMDLs were shared and there was a request for a consensus to proceed with submission of the final TMDL for EPA approval.

Public Comment Period for the Pend Oreille Tributary TMDLs

On September 4th, 2007, the Pend Oreille Tributary TMDLs were posted on the DEQ website for public comment, and the comment period closed October 4th, 2007. Comments received were individually addressed by DEQ and the final TMDL was sent for EPA approval in November 2007 (Appendix D).

Idaho DEQ has complied with the WAG consultation requirements set forth in Idaho Code §39-3611. DEQ has provided the WAG with all available information concerning applicable water quality standards, water quality data, monitoring, assessments, reports, procedures, and schedules. All presentations and drafts provided at WAG meetings were made available on the DEQ website devoted to the Pend Oreille River WAG throughout the process.

DEQ utilized the knowledge, expertise, experience, and information of the WAG in developing this TMDL. DEQ also provided the WAG with an adequate opportunity to participate in drafting the TMDL and to suggest changes to the document. Final copies of the TMDL will be made available to the general public and distributed to WAG and Tributary Work Group members (Appendix E).