

2000 EIK TISSUE LABORATORY ANALYSIS RESULTS

IDFG License Number	Map ID	General Kill Location	Distance to the Closest Phosphate Mine	Kill Date	Sex	Age		Liver Moisture Content (%)	Muscle Moisture Content (%)	Selenium				Cadmium			
						< 1 Year	> 1Year			Liver		Skeletal Muscle		Liver		Skeletal Muscle	
										Validated Wet-Weight (mg/kg)	Validated Dry-Weight (mg/kg)	Validated Wet-Weight (mg/kg)	Validated Dry-Weight (mg/kg)	Validated Wet-Weight (mg/kg)	Validated Dry-Weight (mg/kg)	Validated Wet-Weight (mg/kg)	Validated Dry-Weight (mg/kg)
101-0-018283	44	Dry Ridge	1.83	11/3/00	M		X	73	67	<b>3.1</b>	<b>11</b>	<b>0.48</b>	<b>1.5</b>	<b>0.29</b>	<b>1.1</b>	<i>0.027</i>	<i>0.090</i>
105-0-013352	38	East Hill	2.67	10/30/00	F		X	72	74	<b>0.29</b>	<b>1.0</b>	<i>0.14</i>	<i>0.56</i>	<b>0.066</b>	<b>0.24</b>	<i>-0.0015</i>	<i>0.0039</i>
302-0-002259	7	Eagle Creek	10.56	10/26/00	M		X	70	68	<b>0.58</b>	<b>1.9</b>	<i>0.16</i>	<i>0.49</i>	<b>0.51</b>	<b>1.7</b>	<i>0.011</i>	<i>0.041</i>
302-0-002305	22	<b>Bitters Peak</b>	22.7	10/27/00	M		X	71	74	<b>1.5</b>	<b>5.0</b>	<b>0.36</b>	<b>1.4</b>	<b>0.28</b>	<b>0.96</b>	<i>0.012</i>	<i>0.057</i>
302-0-002468	25	Bald Mountain	19.51	10/27/00	M	X		65	69	<b>0.46</b>	<b>1.3</b>	<i>0.19</i>	<i>0.60</i>	<b>0.46</b>	<b>1.3</b>	<i>0.020</i>	<i>0.072</i>
302-0-002592	8	Diamond Creek	3.07	10/26/00	F	X		69	73	<b>2.2</b>	<b>7.0</b>	<b>0.48</b>	<b>1.8</b>	<b>0.39</b>	<b>1.3</b>	<i>-0.0073</i>	<i>-0.018</i>
302-0-002822	26	Bear Canyon	3.08	10/27/00	F		X	70	72	<b>0.53</b>	<b>1.8</b>	<i>0.22</i>	<i>0.78</i>	<b>0.19</b>	<b>0.63</b>	<i>-0.0062</i>	<i>-0.013</i>
302-0-003080	27	Trail Canyon	4.76	10/27/00	F		X	71	76	<b>4.6</b>	<b>16</b>	<b>0.54</b>	<b>2.2</b>	<b>0.36</b>	<b>1.2</b>	<i>0.0033</i>	<i>0.024</i>
302-0-003818	9	Wolf Mountain	0.06	10/26/00	M		X	71	75	<b>0.64</b>	<b>2.2</b>	<i>0.21</i>	<i>0.84</i>	<b>0.34</b>	<b>1.2</b>	<i>0.0007</i>	<i>0.013</i>
302-0-004374	28	Woodall Mountain	0.13	10/27/00	F		X	71	73	<b>6.3</b>	<b>22</b>	<b>0.47</b>	<b>1.7</b>	<b>0.32</b>	<b>1.1</b>	<i>-0.0007</i>	<i>0.0067</i>
302-0-004558	36	Wooly Range	0.45	10/29/00	M		X	75	73	<b>0.45</b>	<b>1.8</b>	<i>0.17</i>	<i>0.64</i>	<b>0.25</b>	<b>1.0</b>	<b>0.031</b>	<b>0.12</b>
302-0-005201	20	Elk Valley	5.95	10/27/00	F		X	70	74	<i>0.25</i>	<i>0.82</i>	<i>0.13</i>	<i>0.51</i>	<b>0.18</b>	<b>0.60</b>	<i>0.022</i>	<i>0.094</i>
302-0-006362	19	Elk Valley	6.06	10/27/00	F		X	69	69	<b>0.76</b>	<b>2.4</b>	<i>0.21</i>	<i>0.68</i>	<b>0.40</b>	<b>1.3</b>	<i>0.020</i>	<i>0.073</i>
302-0-006834	21	Lower Slug Creek	0.85	10/27/00	M	X		72	76	<b>0.52</b>	<b>1.9</b>	<i>0.16</i>	<i>0.67</i>	<b>0.15</b>	<b>0.53</b>	<i>0.0028</i>	<i>0.022</i>
302-0-007359	37	Clark Valley	1.52	10/29/00	M		X	72	75	<b>2.4</b>	<b>8.7</b>	<b>0.31</b>	<b>1.20</b>	<b>0.20</b>	<b>0.73</b>	<b>0.032</b>	<b>0.14</b>
302-0-007469	33	Lower Dry Valley	0.97	10/28/00	M		X	71	77	<b>9.9</b>	<b>34</b>	<b>0.29</b>	<b>1.3</b>	<b>0.26</b>	<b>0.89</b>	<i>0.024</i>	<b>0.12</b>
302-0-007561	34	Dry Ridge	0.83	10/28/00	F	X		71	74	<b>0.31</b>	<b>1.1</b>	<i>0.14</i>	<i>0.55</i>	<b>0.11</b>	<b>0.38</b>	<i>0.0053</i>	<i>0.030</i>
302-0-008085	24	Dry Valley	0.42	10/27/00	F	X		75	75	<b>0.70</b>	<b>2.8</b>	<i>0.22</i>	<i>0.89</i>	<b>0.30</b>	<b>1.2</b>	<i>0.011</i>	<i>0.054</i>
302-0-008196	10	Slug Creek	1.57	10/26/00	F		X	69	72	<b>2.5</b>	<b>8.0</b>	<b>0.60</b>	<b>2.2</b>	<b>0.15</b>	<b>0.48</b>	<i>-0.0028</i>	<i>-0.0011</i>
302-0-008702	23	Surge Canyon	10.31	10/27/00	M	X		72	72	<b>0.36</b>	<b>1.3</b>	<i>0.22</i>	<i>0.79</i>	<b>0.12</b>	<b>0.43</b>	<b>0.12</b>	<b>0.43</b>
302-0-008950	11	Long Valley	0.2	10/26/00	M		X	72	73	<b>0.44</b>	<b>1.6</b>	<i>0.24</i>	<i>0.90</i>	<b>0.24</b>	<b>0.85</b>	<i>0.0032</i>	<i>0.021</i>
302-0-010102	48	Little Gray Ridge	2.94	11/5/00	F		X	70	73	<b>0.45</b>	<b>1.5</b>	<i>0.18</i>	<i>0.65</i>	<b>0.66</b>	<b>2.2</b>	<i>-0.013</i>	<i>-0.037</i>
302-0-010245	12	Wooley Valley	0.21	10/26/00	M		X	72	74	<b>1.1</b>	<b>3.9</b>	<i>0.26</i>	<i>0.98</i>	<b>0.32</b>	<b>1.1</b>	<i>-0.0017</i>	<i>0.0031</i>
302-0-010754	29	Dry Ridge	1.08	10/27/00	F		X	70	75	<b>3.4</b>	<b>11</b>	<b>0.83</b>	<b>3.3</b>	<b>0.66</b>	<b>2.2</b>	<i>0.0052</i>	<i>0.031</i>
302-0-011386	39	Campbell Creek	1.62	10/31/00	F		X	72	65	<b>1.5</b>	<b>5.2</b>	<b>0.33</b>	<b>0.94</b>	<b>0.12</b>	<b>0.43</b>	<i>-0.0089</i>	<i>-0.018</i>
302-0-011541	46	Morgon Meadows	12.54	11/4/00	F		X	70	73	<b>0.69</b>	<b>2.3</b>	<i>0.18</i>	<i>0.65</i>	<b>0.30</b>	<b>1.0</b>	<i>0.024</i>	<i>0.10</i>
302-0-011848	1	Fox Hills	0.05	10/26/00	M		X	72	75	<b>1.2</b>	<b>4.1</b>	<b>0.36</b>	<b>1.4</b>	<b>0.24</b>	<b>0.87</b>	<i>0.010</i>	<i>0.051</i>
302-0-011888	30	Campbell Canyon	0.95	10/27/00	M		X	72	72	<b>1.1</b>	<b>4.1</b>	<b>0.49</b>	<b>1.8</b>	<b>0.25</b>	<b>0.89</b>	<i>-0.0041</i>	<i>-0.0059</i>
302-0-012005	47	Stewart Canyon (point on map suggests Hornet Canyon)	2.81	11/5/00	F		X	72	75	<b>2.1</b>	<b>7.5</b>	<i>0.26</i>	<i>1.0</i>	<b>0.22</b>	<b>0.78</b>	<i>-0.010</i>	<i>-0.030</i>
302-0-012071	2	Jacknife Creek	15.86	10/26/00	M		X	69	70	<b>0.39</b>	<b>1.2</b>	<i>0.15</i>	<i>0.50</i>	<b>0.40</b>	<b>1.3</b>	<b>0.050</b>	<b>0.18</b>
302-0-012165	13	Eagle Creek	11.07	10/26/00	M		X	69	72	<b>0.42</b>	<b>1.3</b>	<i>0.15</i>	<i>0.52</i>	<b>0.34</b>	<b>1.1</b>	<i>0.0054</i>	<i>0.028</i>
302-0-012171	14	Left Hand Fork Georgetown Creek	2.62	10/26/00	F		X	69	69	<b>0.38</b>	<b>1.2</b>	<i>0.16</i>	<i>0.53</i>	<b>0.055</b>	<b>0.18</b>	<i>-0.019</i>	<i>-0.052</i>
302-0-012249	6	Wolf Mountain/Big Basin	4.32	10/26/00	F		X	68	75	<b>0.79</b>	<b>2.5</b>	<i>0.19</i>	<i>0.75</i>	<b>0.19</b>	<b>0.59</b>	<i>0.013</i>	<i>0.061</i>
302-0-012320	31	Dry Valley	0.5	10/28/00	F		X	71	76	<b>13</b>	<b>45</b>	<b>0.50</b>	<b>2.1</b>	<b>0.16</b>	<b>0.55</b>	<i>-0.0087</i>	<i>-0.026</i>
302-0-012404	50	Left Hand Fork Georgetown Creek	0.54	11/5/00	F		X	72	73	<b>0.65</b>	<b>2.3</b>	<b>0.39</b>	<b>1.4</b>	<b>0.29</b>	<b>1.0</b>	<i>0.018</i>	<i>0.076</i>
302-0-012589	49	Hornet Canyon (point on map suggests Kendall Creek)	1.11	11/5/00	F		X	73	74	<b>9.3</b>	<b>34</b>	<b>0.55</b>	<b>2.1</b>	<b>0.26</b>	<b>0.96</b>	<i>-0.018</i>	<i>-0.060</i>
302-0-012912	41	Stewart Canyon (point on map suggests Hornet Canyon)	2.7	11/1/00	M	X		69	72	<b>0.48</b>	<b>1.6</b>	<i>0.23</i>	<i>0.83</i>	<b>0.36</b>	<b>1.2</b>	<i>0.019</i>	<i>0.078</i>
302-0-013359	42	Dry Ridge	1.82	11/3/00	M		X	73	73	<b>3.0</b>	<b>11</b>	<i>0.24</i>	<i>0.90</i>	<b>0.14</b>	<b>0.52</b>	<i>-0.022</i>	<i>-0.071</i>
352-0-001280	43	Dry Ridge	2.43	11/3/00	F		X	71	71	<b>0.61</b>	<b>2.1</b>	<i>0.15</i>	<i>0.52</i>	<b>0.43</b>	<b>1.5</b>	<b>0.036</b>	<b>0.13</b>
352-0-001341	35	Dry Ridge	0.54	10/28/00	F		X	68	72	<b>0.36</b>	<b>1.1</b>	<i>0.16</i>	<i>0.59</i>	<b>0.13</b>	<b>0.40</b>	<i>0.012</i>	<i>0.052</i>
352-0-001809	40	Dunns Canyon	0.54	10/31/00	M		X	70	68	<b>0.33</b>	<b>1.1</b>	<i>0.18</i>	<i>0.55</i>	<b>0.15</b>	<b>0.50</b>	<i>-0.012</i>	<i>-0.028</i>
352-0-002092	32	Jacknife Creek	16.51	10/28/00	F		X	69	71	<b>0.35</b>	<b>1.1</b>	<i>0.17</i>	<i>0.60</i>	<b>0.13</b>	<b>0.42</b>	<i>-0.0072</i>	<i>-0.016</i>
352-0-002103	3	Bear Canyon	11.42	10/26/00	M		X	74	71	<b>0.47</b>	<b>1.8</b>	<i>0.19</i>	<i>0.65</i>	<b>0.16</b>	<b>0.61</b>	<i>0.014</i>	<i>0.056</i>
352-0-002110	15	Smoky Canyon	0.26	10/26/00	F		X	67	74	<b>7.3</b>	<b>22</b>	<b>0.54</b>	<b>2.1</b>	<b>0.31</b>	<b>0.94</b>	<i>-0.0051</i>	<i>-0.010</i>
352-0-002142	16	Dry Ridge	0.34	10/26/00	F		X	71	75	<b>5.6</b>	<b>19</b>	<b>0.57</b>	<b>2.2</b>	<b>0.43</b>	<b>1.5</b>	<i>-0.0054</i>	<i>-0.012</i>
352-0-002144	17	Deer Creek	2.86	10/26/00	M		X	72	72	<b>0.42</b>	<b>1.5</b>	<i>0.16</i>	<i>0.57</i>	<b>0.37</b>	<b>1.3</b>	<i>0.0053</i>	<i>0.028</i>
352-0-002150	18	Tincup	12.05	10/26/00	F		X	69	76	<b>0.58</b>	<b>1.9</b>	<i>0.21</i>	<i>0.86</i>	<b>0.37</b>	<b>1.2</b>	<b>0.15</b>	<b>0.61</b>
352-0-002177	5	Wooley Range	0.08	10/26/00	M		X	74	76	<b>0.65</b>	<b>2.5</b>	<i>0.17</i>	<i>0.7</i>	<b>0.16</b>	<b>0.60</b>	<i>0.0000</i>	<i>0.010</i>
352-0-002194	4	Tygee Creek	0.047	10/26/00	M	X		71	76	<b>0.35</b>	<b>1.2</b>	<i>0.13</i>	<i>0.51</i>	<b>0.11</b>	<b>0.38</b>	<i>0.0069</i>	<i>0.038</i>
402-0-001023	45	Bear Canyon	13.15	11/4/00	M		X	72	73	<b>0.43</b>	<b>1.5</b>	<i>0.15</i>	<i>0.57</i>	<b>0.31</b>	<b>1.1</b>	<i>-0.016</i>	<i>-0.048</i>

Notes: **Bolded values exceed the 95% upper confidence limit of the 95<sup>th</sup> percentile of blank results, therefore discernibly different from a blank.**  
*Italicized values do not exceed the 95% upper confidence limit of the 95<sup>th</sup> percentile of blank results, therefore not discernibly different from a blank.*  
 Shaded cells indicate no value was reported.

2000 EIK TISSUE LABORATORY ANALYSIS RESULTS

IDFG License Number	Map ID	General Kill Location	Distance to the Closest Phosphate Mine	Kill Date	Sex	Age		Liver Moisture Content (%)	Muscle Moisture Content (%)	Copper				Iron			
						< 1 Year	> 1Year			Liver		Skeletal Muscle		Liver		Skeletal Muscle	
										Validated (mg/kg)	Validated (mg/kg)	Validated (mg/kg)	Validated (mg/kg)	Validated (mg/kg)	Validated (mg/kg)	Validated (mg/kg)	Validated (mg/kg)
101-0-018283	44	Dry Ridge	1.83	11/3/00	M		X	73	67	8.1	30	1.8	5.6	170	620	49	150
105-0-013352	38	East Hill	2.67	10/30/00	F		X	72	74	16	59	1.2	4.7	120	410	90	350
302-0-002259	7	Eagle Creek	10.56	10/26/00	M		X	70	68	56	190	1.0	3.2	220	730	46	140
302-0-002305	22	<b>Bitters Peak</b>	22.7	10/27/00	M		X	71	74	21	72	1.3	4.8	300	1020	42	160
302-0-002468	25	Bald Mountain	19.51	10/27/00	M	X		65	69	19	53	1.8	5.8	160	450	67	220
302-0-002592	8	Diamond Creek	3.07	10/26/00	F	X		69	73	11	35	1.6	6.0	130	400	35	130
302-0-002822	26	Bear Canyon	3.08	10/27/00	F		X	70	72	25	82	1.3	4.5	190	630	50	170
302-0-003080	27	Trail Canyon	4.76	10/27/00	F		X	71	76	9.1	31	1.7	7.2	120	400	38	160
302-0-003818	9	Wolf Mountain	0.06	10/26/00	M		X	71	75	39	140	1.6	6.5	190	650	38	150
302-0-004374	28	Woodall Mountain	0.13	10/27/00	F		X	71	73	22	76	1.5	5.7	76	260	61	220
302-0-004558	36	Wooly Range	0.45	10/29/00	M		X	75	73	10	41	0.82	3.0	150	590	33	120
302-0-005201	20	Elk Valley	5.95	10/27/00	F		X	70	74	52	170	1.4	5.5	190	630	35	140
302-0-006362	19	Elk Valley	6.06	10/27/00	F		X	69	69	38	120	1.6	5.1	100	330	44	140
302-0-006834	21	Lower Slug Creek	0.85	10/27/00	M	X		72	76	15	53	1.2	5.1	120	410	24	100
302-0-007359	37	Clark Valley	1.52	10/29/00	M		X	72	75	12	44	1.2	4.9	120	430	69	280
302-0-007469	33	Lower Dry Valley	0.97	10/28/00	M		X	71	77	25	85	1.0	4.4	130	430	31	140
302-0-007561	34	Dry Ridge	0.83	10/28/00	F	X		71	74	10	35	2.1	8.3	140	470	130	480
302-0-008085	24	Dry Valley	0.42	10/27/00	F	X		75	75	13	54	2.0	8.2	120	460	31	130
302-0-008196	10	Slug Creek	1.57	10/26/00	F		X	69	72	15	50	2.3	8.0	120	370	38	130
302-0-008702	23	Sumge Canyon	10.31	10/27/00	M	X		72	72	10	37	1.6	5.8	83	290	30	110
302-0-008950	11	Long Valley	0.2	10/26/00	M		X	72	73	26	92	1.6	6.0	220	780	76	280
302-0-010102	48	Little Gray Ridge	2.94	11/5/00	F		X	70	73	41	140	1.7	6.4	140	470	48	180
302-0-010245	12	Wooley Valley	0.21	10/26/00	M		X	72	74	25	88	2.3	8.7	270	970	71	270
302-0-010754	29	Dry Ridge	1.08	10/27/00	F		X	70	75	8.6	29	1.1	4.5	140	450	32	130
302-0-011386	39	Campbell Creek	1.62	10/31/00	F		X	72	65	49	180	1.4	4.1	130	450	40	110
302-0-011541	46	Morgon Meadows	12.54	11/4/00	F		X	70	73	44	150	1.2	4.5	230	770	55	200
302-0-011848	1	Fox Hills	0.05	10/26/00	M		X	72	75	20	72	0.85	3.4	150	550	39	160
302-0-011888	30	Campbell Canyon	0.95	10/27/00	M		X	72	72	16	57	0.74	2.6	150	520	27	100
302-0-012005	47	Stewart Canyon (point on map suggests Hornet Canyon)	2.81	11/5/00	F		X	72	75	30	110	1.6	6.5	140	490	35	140
302-0-012071	2	Jacknife Creek	15.86	10/26/00	M		X	69	70	20	63	1.2	4.1	260	840	100	340
302-0-012165	13	Eagle Creek	11.07	10/26/00	M			69	72	32	100	1.1	3.9	180	570	28	100
302-0-012171	14	Left Hand Fork Georgetown Creek	2.62	10/26/00	F		X	69	69	64	210	2.0	6.6	120	390	41	130
302-0-012249	6	Wolf Mountain/Big Basin	4.32	10/26/00	F		X	68	75	32	100	1.5	6.1	150	460	35	140
302-0-012320	31	Dry Valley	0.5	10/28/00	F		X	71	76	29	100	1.4	5.9	140	470	38	160
302-0-012404	50	Left Hand Fork Georgetown Creek	0.54	11/5/00	F		X	72	73	15	55	1.9	7.2	150	520	35	130
302-0-012589	49	Hornet Canyon (point on map suggests Kendall Creek)	1.11	11/5/00	F		X	73	74	25	92	2.3	8.7	130	460	44	170
302-0-012912	41	Stewart Canyon (point on map suggests Hornet Canyon)	2.7	11/1/00	M	X		69	72	15	50	1.1	4.0	230	740	18	60
302-0-013359	42	Dry Ridge	1.82	11/3/00	M		X	73	73	23	84	0.75	2.8	200	740	47	170
352-0-001280	43	Dry Ridge	2.43	11/3/00	F		X	71	71	42	150	1.1	3.9	130	430	34	120
352-0-001341	35	Dry Ridge	0.54	10/28/00	F			68	72	61	190	1.1	4.0	210	650	250	900
352-0-001809	40	Dunns Canyon	0.54	10/31/00	M		X	70	68	64	210	2.3	7.0	240	800	48	150
352-0-002092	32	Jacknife Creek	16.51	10/28/00	F		X	69	71	31	100	2.3	7.8	77	250	26	90
352-0-002103	3	Bear Canyon	11.42	10/26/00	M		X	74	71	42	160	1.6	5.6	200	760	30	100
352-0-002110	15	Smoky Canyon	0.26	10/26/00	F		X	67	74	24	72	1.5	5.9	170	510	40	150
352-0-002142	16	Dry Ridge	0.34	10/26/00	F		X	71	75	38	130	1.8	7.2	150	500	48	190
352-0-002144	17	Deer Creek	2.86	10/26/00	M		X	72	72	54	190	2.1	7.5	190	670	46	160
352-0-002150	18	Tincup	12.05	10/26/00	F		X	69	76	33	110	2.6	10	240	760	63	260
352-0-002177	5	Wooley Range	0.08	10/26/00	M		X	74	76	54	210	1.3	5.4	220	840	38	160
352-0-002194	4	Tygee Creek	0.047	10/26/00	M	X		71	76	23	78	0.62	2.5	170	590	17	70
402-0-001023	45	Bear Canyon	13.15	11/4/00	M		X	72	73	20	71	0.82	3.1	240	860	27	100

Notes: **Bolded values exceed the 95% upper confidence limit of the 95<sup>th</sup> percentile of blank results, therefore discernibly different from a blank.**  
*Italicized values do not exceed the 95% upper confidence limit of the 95<sup>th</sup> percentile of blank results, therefore not discernibly different from a blank.*  
 Shaded cells indicate no value was reported.

2000 EIK TISSUE LABORATORY ANALYSIS RESULTS

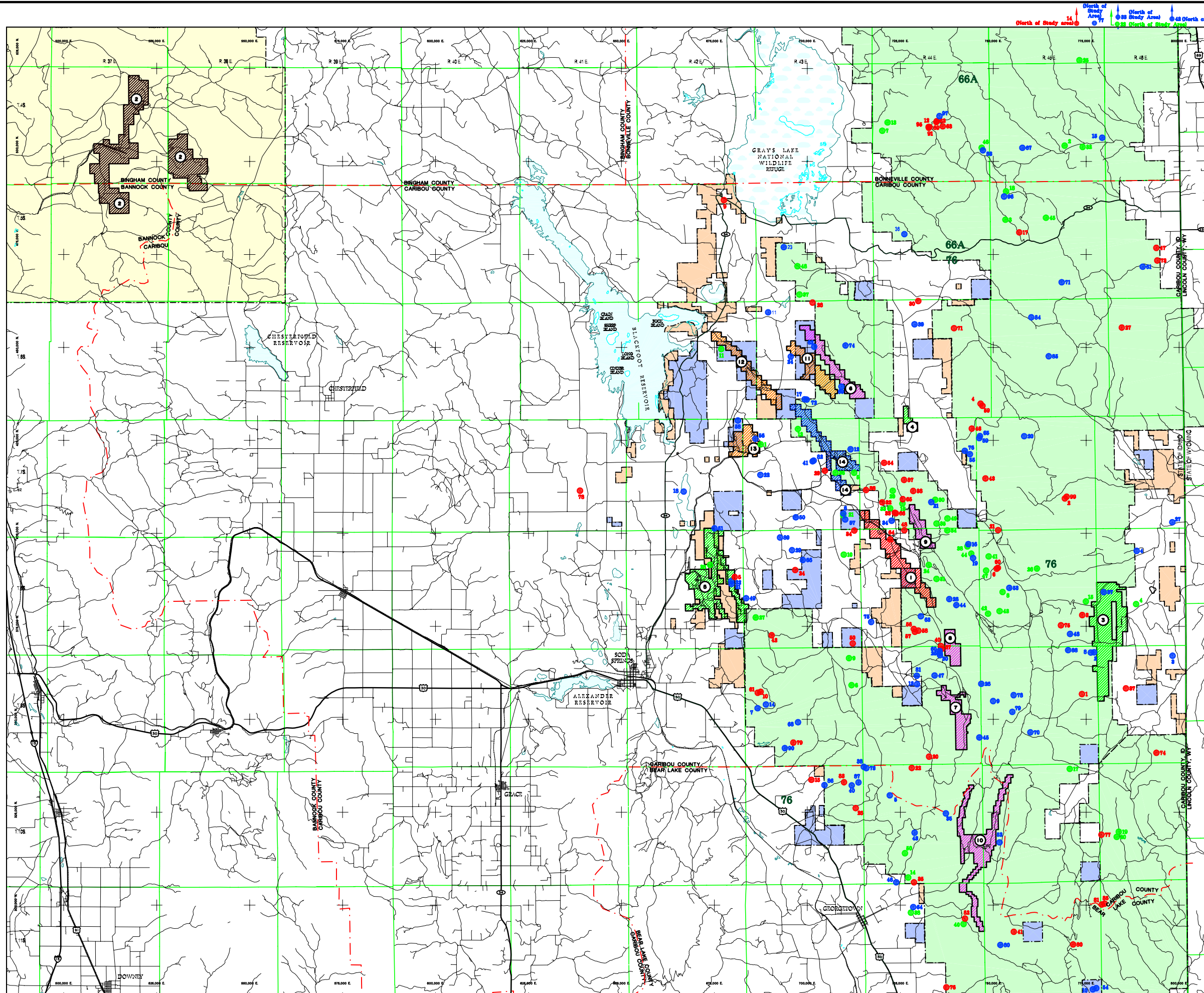
IDFG License Number	Map ID	General Kill Location	Distance to the Closest Phosphate Mine	Kill Date	Sex	Age		Liver Moisture Content (%)	Muscle Moisture Content (%)	Lead				Manganese			
						< 1 Year	> 1Year			Liver		Skeletal Muscle		Liver		Skeletal Muscle	
										Validated (mg/kg)	Validated (mg/kg)	Validated (mg/kg)	Validated (mg/kg)	Validated (mg/kg)	Validated (mg/kg)	Validated (mg/kg)	Validated (mg/kg)
101-0-018283	44	Dry Ridge	1.83	11/3/00	M		X	73	67	0.22	0.82	0.038	0.12	2.2	8.1	0.31	0.93
105-0-013352	38	East Hill	2.67	10/30/00	F		X	72	74	-0.077	-0.28	-0.039	-0.15	4.4	16	0.16	0.61
302-0-002259	7	Eagle Creek	10.56	10/26/00	M		X	70	68	0.13	0.44	-0.12	-0.39	2.0	6.6	0.16	0.49
302-0-002305	22	Bitters Peak	22.7	10/27/00	M		X	71	74	0.24	0.82	0.055	0.21	3.6	12	0.23	0.87
302-0-002468	25	Bald Mountain	19.51	10/27/00	M	X		65	69	0.19	0.55	0.044	0.14	4.3	12	0.58	1.9
302-0-002592	8	Diamond Creek	3.07	10/26/00	F	X		69	73	-0.037	-0.12	0.034	0.13	3.0	9.7	0.15	0.58
302-0-002822	26	Bear Canyon	3.08	10/27/00	F		X	70	72	0.76	2.5	50	170	3.8	13	1.0	3.6
302-0-003080	27	Trail Canyon	4.76	10/27/00	F		X	71	76	0.65	2.2	0.22	0.93	2.8	9.6	0.34	1.4
302-0-003818	9	Wolf Mountain	0.06	10/26/00	M		X	71	75	0.32	1.1	0.34	1.36	2.3	7.9	0.23	0.91
302-0-004374	28	Woodall Mountain	0.13	10/27/00	F		X	71	73	0.27	0.94	0.28	1.02	2.9	9.9	0.079	0.29
302-0-004558	36	Wooly Range	0.45	10/29/00	M		X	75	73	0.14	0.56	-0.077	-0.28	2.0	7.9	0.24	0.88
302-0-005201	20	Elk Valley	5.95	10/27/00	F		X	70	74	0.14	0.45	0.21	0.83	2.8	9.2	0.13	0.49
302-0-006362	19	Elk Valley	6.06	10/27/00	F		X	69	69	-1.2	-3.8	0.15	0.47	3.2	10	0.20	0.64
302-0-006834	21	Lower Slug Creek	0.85	10/27/00	M	X		72	76	0.13	0.46	0.15	0.62	2.9	10	0.20	0.84
302-0-007359	37	Clark Valley	1.52	10/29/00	M		X	72	75	-0.16	-0.58	-0.028	-0.11	3.0	11	1.6	6.3
302-0-007469	33	Lower Dry Valley	0.97	10/28/00	M		X	71	77	0.030	0.10	0.13	0.56	2.6	8.9	0.22	0.94
302-0-007561	34	Dry Ridge	0.83	10/28/00	F	X		71	74	0.050	0.17	0.31	1.20	2.7	9.2	4.9	19
302-0-008085	24	Dry Valley	0.42	10/27/00	F	X		75	75	-0.10	-0.40	-0.23	-0.93	3.2	13	0.38	1.5
302-0-008196	10	Slug Creek	1.57	10/26/00	F		X	69	72	-0.074	-0.24	-0.080	-0.28	3.4	11	0.21	0.76
302-0-008702	23	Sumge Canyon	10.31	10/27/00	M	X		72	72	-0.12	-0.42	-0.12	-0.42	2.8	9.9	0.19	0.67
302-0-008950	11	Long Valley	0.2	10/26/00	M		X	72	73	-0.021	-0.076	0.070	0.26	2.4	8.5	0.71	2.6
302-0-010102	48	Little Gray Ridge	2.94	11/5/00	F		X	70	73	-0.00027	-0.00090	-0.091	-0.34	2.7	8.9	0.14	0.51
302-0-010245	12	Wooley Valley	0.21	10/26/00	M		X	72	74	-0.028	-0.10	0.12	0.45	2.3	8.1	0.58	2.2
302-0-010754	29	Dry Ridge	1.08	10/27/00	F		X	70	75	0.54	1.8	-0.40	-1.60	3.6	12	0.16	0.63
302-0-011386	39	Campbell Creek	1.62	10/31/00	F		X	72	65	-0.12	-0.43	-0.13	-0.38	2.2	7.8	0.088	0.25
302-0-011541	46	Morgon Meadows	12.54	11/4/00	F		X	70	73	0.048	0.16	0.055	0.20	2.4	7.9	0.72	2.7
302-0-011848	1	Fox Hills	0.05	10/26/00	M		X	72	75	0.17	0.60	-0.099	-0.39	2.1	7.7	0.33	1.3
302-0-011888	30	Campbell Canyon	0.95	10/27/00	M		X	72	72	-0.0025	-0.0090	-0.039	-0.14	2.4	8.7	0.28	0.99
302-0-012005	47	Stewart Canyon (point on map suggests Hornet Canyon)	2.81	11/5/00	F		X	72	75	-0.22	-0.78	-0.15	-0.59	3.2	11	0.23	0.91
302-0-012071	2	Jacknife Creek	15.86	10/26/00	M		X	69	70	-0.17	-0.55	-0.001	-0.0037	3.4	11	1.9	6.3
302-0-012165	13	Eagle Creek	11.07	10/26/00	M			69	72	-0.074	-0.24	-0.044	-0.16	2.0	6.6	0.14	0.50
302-0-012171	14	Left Hand Fork Georgetown Creek	2.62	10/26/00	F		X	69	69	0.0059	0.019	-0.054	-0.17	3.6	12	0.23	0.73
302-0-012249	6	Wolf Mountain/Big Basin	4.32	10/26/00	F		X	68	75	-0.24	-0.77	-0.023	-0.093	3.2	9.9	0.23	0.91
302-0-012320	31	Dry Valley	0.5	10/28/00	F		X	71	76	0.17	0.57	-0.13	-0.55	3.3	11	0.068	0.29
302-0-012404	50	Left Hand Fork Georgetown Creek	0.54	11/5/00	F		X	72	73	0.10	0.36	0.039	0.14	3.0	11	0.16	0.58
302-0-012589	49	Hornet Canyon (point on map suggests Kendall Creek)	1.11	11/5/00	F		X	73	74	-0.033	-0.12	-0.18	-0.71	2.5	9.2	0.32	1.2
302-0-012912	41	Stewart Canyon (point on map suggests Hornet Canyon)	2.7	11/1/00	M	X		69	72	0.015	0.050	0.061	0.22	2.7	8.6	0.16	0.56
302-0-013359	42	Dry Ridge	1.82	11/3/00	M		X	73	73	-0.12	-0.44	-0.014	-0.053	2.9	11	0.95	3.5
352-0-001280	43	Dry Ridge	2.43	11/3/00	F		X	71	71	0.19	0.66	-0.021	-0.074	3.0	10	0.12	0.41
352-0-001341	35	Dry Ridge	0.54	10/28/00	F			68	72	-0.069	-0.21	0.44	1.6	3.4	11	6.7	24
352-0-001809	40	Dunns Canyon	0.54	10/31/00	M		X	70	68	-0.0078	-0.030	0.014	0.045	2.2	7.3	0.20	0.62
352-0-002092	32	Jacknife Creek	16.51	10/28/00	F		X	69	71	0.11	0.37	0.40	1.4	3.7	12	0.21	0.72
352-0-002103	3	Bear Canyon	11.42	10/26/00	M		X	74	71	-0.032	-0.12	-0.018	-0.062	1.4	5.3	0.17	0.58
352-0-002110	15	Smoky Canyon	0.26	10/26/00	F		X	67	74	0.0080	0.024	-0.14	-0.54	3.8	11	0.48	1.8
352-0-002142	16	Dry Ridge	0.34	10/26/00	F		X	71	75	0.26	0.90	0.024	0.093	2.8	9.6	0.34	1.3
352-0-002144	17	Deer Creek	2.86	10/26/00	M		X	72	72	0.083	0.30	-0.032	-0.12	1.4	5.2	0.25	0.89
352-0-002150	18	Tincup	12.05	10/26/00	F		X	69	76	0.058	0.19	0.043	0.18	9.5	31	5.0	20
352-0-002177	5	Wooley Range	0.08	10/26/00	M		X	74	76	-0.0073	-0.028	0.14	0.59	2.5	9.5	0.15	0.63
352-0-002194	4	Tygee Creek	0.047	10/26/00	M	X		71	76	-0.059	-0.20	0.11	0.43	3.7	13	0.10	0.40
402-0-001023	45	Bear Canyon	13.15	11/4/00	M		X	72	73	-0.10	-0.36	-0.15	-0.55	1.7	6.0	0.074	0.28

Notes: **Bolded values exceed the 95% upper confidence limit of the 95<sup>th</sup> percentile of blank results, therefore discernibly different from a blank.**  
*Italicized values do not exceed the 95% upper confidence limit of the 95<sup>th</sup> percentile of blank results, therefore not discernibly different from a blank.*  
 Shaded cells indicate no value was reported.

2000 EIK TISSUE LABORATORY ANALYSIS RESULTS

IDFG License Number	Map ID	General Kill Location	Distance to the Closest Phosphate Mine	Kill Date	Sex	Age		Liver Moisture Content (%)	Muscle Moisture Content (%)	Molybdenum				Zinc			
						< 1 Year	> 1Year			Liver		Skeletal Muscle		Liver		Skeletal Muscle	
										Validated Wet-Weight (mg/kg)	Validated Dry-Weight (mg/kg)	Validated Wet-Weight (mg/kg)	Validated Dry-Weight (mg/kg)	Validated Wet-Weight (mg/kg)	Validated Dry-Weight (mg/kg)	Validated Wet-Weight (mg/kg)	Validated Dry-Weight (mg/kg)
101-0-018283	44	Dry Ridge	1.83	11/3/00	M		X	73	67	1.3	4.7	-0.037	-0.11	23	86	110	340
105-0-013352	38	East Hill	2.67	10/30/00	F		X	72	74	1.4	4.9	0.054	0.21	21	76	46	180
302-0-002259	7	Eagle Creek	10.56	10/26/00	M		X	70	68	1.2	3.9	0.077	0.24	18	60	49	150
302-0-002305	22	Bitters Peak	22.7	10/27/00	M		X	71	74	1.5	5.3	0.088	0.34	26	89	81	310
302-0-002468	25	Bald Mountain	19.51	10/27/00	M	X		65	69	2.0	5.7	-0.070	-0.22	40	120	62	200
302-0-002592	8	Diamond Creek	3.07	10/26/00	F	X		69	73	1.5	5.0	0.0075	0.028	29	92	50	190
302-0-002822	26	Bear Canyon	3.08	10/27/00	F		X	70	72	1.3	4.3	0.022	0.078	29	97	88	310
302-0-003080	27	Trail Canyon	4.76	10/27/00	F		X	71	76	1.1	3.7	-0.050	-0.21	27	94	69	290
302-0-003818	9	Wolf Mountain	0.06	10/26/00	M		X	71	75	0.93	3.2	0.028	0.11	19	66	59	240
302-0-004374	28	Woodall Mountain	0.13	10/27/00	F		X	71	73	0.87	3.0	0.012	0.045	24	83	24	90
302-0-004558	36	Wooly Range	0.45	10/29/00	M		X	75	73	0.98	3.9	0.14	0.51	18	73	77	280
302-0-005201	20	Elk Valley	5.95	10/27/00	F		X	70	74	1.4	4.6	0.087	0.34	28	94	59	230
302-0-006362	19	Elk Valley	6.06	10/27/00	F		X	69	69	1.4	4.5	0.038	0.12	22	72	73	240
302-0-006834	21	Lower Slug Creek	0.85	10/27/00	M	X		72	76	1.3	4.6	0.047	0.20	31	110	46	190
302-0-007359	37	Clark Valley	1.52	10/29/00	M		X	72	75	1.5	5.3	-0.041	-0.16	38	140	60	240
302-0-007469	33	Lower Dry Valley	0.97	10/28/00	M		X	71	77	0.98	3.4	-0.047	-0.20	23	80	69	300
302-0-007561	34	Dry Ridge	0.83	10/28/00	F	X		71	74	1.4	4.8	0.037	0.14	32	110	21	81
302-0-008085	24	Dry Valley	0.42	10/27/00	F	X		75	75	1.3	5.1	-0.0097	-0.039	30	120	27	110
302-0-008196	10	Slug Creek	1.57	10/26/00	F		X	69	72	1.4	4.5	-0.011	-0.039	30	98	36	130
302-0-008702	23	Surmge Canyon	10.31	10/27/00	M	X		72	72	1.2	4.2	1.2	4.4	36	130	39	140
302-0-008950	11	Long Valley	0.2	10/26/00	M		X	72	73	0.80	2.9	0.018	0.068	23	83	23	86
302-0-010102	48	Little Gray Ridge	2.94	11/5/00	F		X	70	73	1.1	3.6	0.014	0.050	24	81	18	67
302-0-010245	12	Wooley Valley	0.21	10/26/00	M		X	72	74	1.1	3.9	0.0073	0.028	25	90	63	240
302-0-010754	29	Dry Ridge	1.08	10/27/00	F		X	70	75	1.2	3.9	0.020	0.081	23	77	57	230
302-0-011386	39	Campbell Creek	1.62	10/31/00	F		X	72	65	1.1	3.9	-0.0095	-0.027	20	72	59	170
302-0-011541	46	Morgon Meadows	12.54	11/4/00	F		X	70	73	1.4	4.6	-0.043	-0.16	23	77	61	230
302-0-011848	1	Fox Hills	0.05	10/26/00	M		X	72	75	1.2	4.2	0.017	0.069	25	89	63	250
302-0-011888	30	Campbell Canyon	0.95	10/27/00	M		X	72	72	1.3	4.6	0.060	0.21	27	95	72	260
302-0-012005	47	Stewart Canyon (point on map suggests Hornet Canyon)	2.81	11/5/00	F		X	72	75	1.5	5.3	-0.064	-0.26	27	97	40	160
302-0-012071	2	Jacknife Creek	15.86	10/26/00	M		X	69	70	1.5	4.8	-0.021	-0.069	26	85	97	320
302-0-012165	13	Eagle Creek	11.07	10/26/00	M		X	69	72	1.3	4.1	0.015	0.053	25	79	53	190
302-0-012171	14	Left Hand Fork Georgetown Creek	2.62	10/26/00	F		X	69	69	1.7	5.4	-0.022	-0.069	23	73	19	62
302-0-012249	6	Wolf Mountain/Big Basin	4.32	10/26/00	F		X	68	75	1.1	3.4	-0.020	-0.081	22	69	29	120
302-0-012320	31	Dry Valley	0.5	10/28/00	F		X	71	76	0.96	3.3	0.035	0.14	25	87	43	180
302-0-012404	50	Left Hand Fork Georgetown Creek	0.54	11/5/00	F		X	72	73	1.1	3.9	0.018	0.065	23	83	21	78
302-0-012589	49	Hornet Canyon (point on map suggests Kendall Creek)	1.11	11/5/00	F		X	73	74	1.1	4.0	-0.0071	-0.027	24	90	39	150
302-0-012912	41	Stewart Canyon (point on map suggests Hornet Canyon)	2.7	11/1/00	M	X		69	72	0.74	2.4	-0.040	-0.14	26	85	52	190
302-0-013359	42	Dry Ridge	1.82	11/3/00	M		X	73	73	0.62	2.3	-0.041	-0.15	28	100	70	260
352-0-001280	43	Dry Ridge	2.43	11/3/00	F		X	71	71	1.4	4.9	0.015	0.053	30	100	65	220
352-0-001341	35	Dry Ridge	0.54	10/28/00	F		X	68	72	1.7	5.3	0.036	0.13	28	88	92	330
352-0-001809	40	Dunns Canyon	0.54	10/31/00	M		X	70	68	0.91	3.0	0.0039	0.012	20	67	37	120
352-0-002092	32	Jacknife Creek	16.51	10/28/00	F		X	69	71	1.6	5.1	0.076	0.26	29	94	28	97
352-0-002103	3	Bear Canyon	11.42	10/26/00	M		X	74	71	1.1	4.2	0.018	0.064	17	66	47	160
352-0-002110	15	Smoky Canyon	0.26	10/26/00	F		X	67	74	0.98	3.0	0.0068	0.026	29	89	82	310
352-0-002142	16	Dry Ridge	0.34	10/26/00	F		X	71	75	0.95	3.3	-0.026	-0.10	24	83	65	250
352-0-002144	17	Deer Creek	2.86	10/26/00	M		X	72	72	0.98	3.5	0.012	0.044	16	56	34	120
352-0-002150	18	Tincup	12.05	10/26/00	F		X	69	76	1.7	5.6	-0.051	-0.21	29	94	36	150
352-0-002177	5	Wooley Range	0.08	10/26/00	M		X	74	76	0.99	3.8	0.065	0.27	19	72	70	290
352-0-002194	4	Tygee Creek	0.047	10/26/00	M	X		71	76	0.84	2.9	-0.069	-0.28	37	130	52	210
402-0-001023	45	Bear Canyon	13.15	11/4/00	M		X	72	73	1.2	4.2	-0.026	-0.097	21	77	81	300

Notes: **Bolded values exceed the 95% upper confidence limit of the 95<sup>th</sup> percentile of blank results, therefore discernibly different from a blank.**  
*Italicized values do not exceed the 95% upper confidence limit of the 95<sup>th</sup> percentile of blank results, therefore not discernibly different from a blank.*  
 Shaded cells indicate no value was reported.



# LEGEND

- CONTOURS
- CREEKS/RIVERS
- LAKES
- MARSH
- ROADS
- RAILROAD
- STATE LINE
- COUNTY LINE

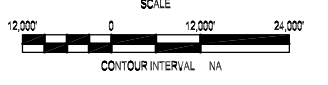
- NATIONAL FOREST
- BUREAU OF LAND MANAGEMENT
- STATE OF IDAHO
- FORT HALL INDIAN RESERVATION

- PHOSPHATE MINES**
- ASTARIS PRODUCTION LLC
  - FMC CORPORATION AND J.R. SIMPLOT COMPANY
  - J.R. SIMPLOT COMPANY
  - NU-WEST MINING, INC. OR NU-WEST INDUSTRIES, INC.
  - MONSANTO COMPANY
  - RHODIA INC.

- ① DRY VALLEY MINE
- ② GAY MINE
- ③ SMOKY CANYON MINE
- ④ LANES CREEK MINE
- ⑤ CONDA MINE
- ⑥ RASMUSSEN RIDGE MINE
- ⑦ MOUNTAIN FUEL MINE
- ⑧ CHAMP MINE
- ⑨ NORTH MAYBE MINE
- ⑩ GEORGETOWN CANYON MINE
- ⑪ ENOCH VALLEY MINE
- ⑫ HENRY MINE
- ⑬ BALLARD MINE
- ⑭ WOOLEY VALLEY MINE

**ELK INFORMATION**

- 1999 ELK LIVER TISSUE SAMPLE
- 1999 ELK LIVER AND MUSCLE TISSUE SAMPLE
- 2000 ELK LIVER AND MUSCLE TISSUE SAMPLE
- GAME MANAGEMENT UNIT BOUNDARY
- 76 GAME MANAGEMENT UNIT BOUNDARY



1	1999-2000 Regional Investigation Report	03/02	M. Hooker	N. Gonzalez	M. Hooker
0	For 1999 Interim Investigation Data Report	10/20/00	J. Weisman	T. Clark	J. Weisman
REV. No.	REVISIONS	DATE	DESIGN BY	DRAWN BY	REVIEWED AND SIGNED BY

**IDAHO MINING ASSOCIATION  
SELENIUM COMMITTEE**

PROJECT: **1999-2000 REGIONAL INVESTIGATION REPORT**  
DRAWING TITLE: **1999-2000 ELK STUDY KILL LOCATIONS**

<b>MWH</b> MONTGOMERY WATSON HARZA	Sheet <u>1</u> Of <u>1</u> Sheets
	SCALE: <u>As Shown</u> DRAWING No. <b>4-5</b>