

# North Fork Coeur d'Alene River Subbasin TMDL Development

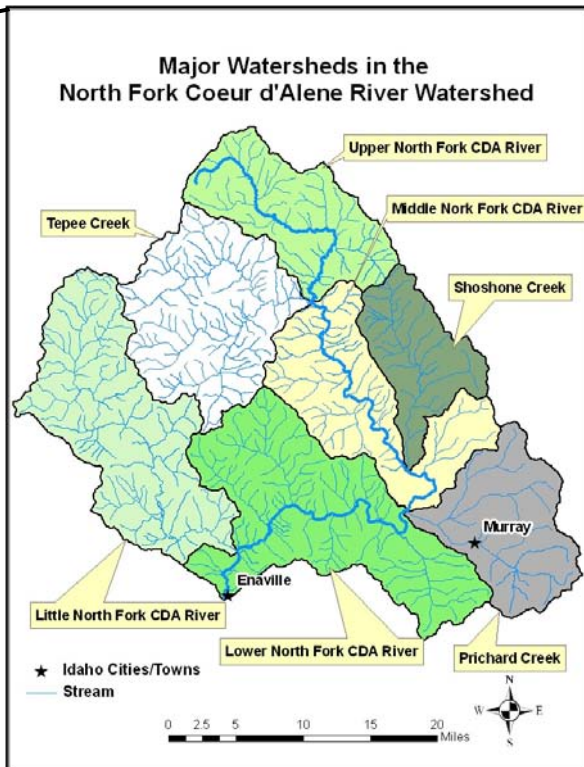
October 31, 2007



**Contact:**  
Kajsa Stromberg  
Watershed Coordinator  
Idaho Department of Environmental Quality  
2110 Ironwood Parkway  
Coeur d'Alene, Idaho 83814  
(208) 769-1422  
[Kajsa.Stromberg@deq.idaho.gov](mailto:Kajsa.Stromberg@deq.idaho.gov)

## Subbasin at a Glance

- 895 square miles of land
- 7 major watersheds
- 1,100 stream miles
- Streams divided into 67 Assessment Units (AUs)
- Beneficial Uses
  - Cold Water Aquatic Life
  - Salmonid Spawning
  - Primary/Secondary Contact Recreation
  - Domestic Water Supply
  - Special Resource Water
  - Agricultural and Industrial Water Supplies
  - Wildlife Habitat
  - Aesthetics



**Obtain information and follow progress of TMDL development in this subbasin on the North Fork Coeur d'Alene River Subbasin Watershed Advisory Group website:**

[http://www.deq.idaho.gov/about/regions/north\\_fork\\_cda\\_river\\_wag/index.cfm](http://www.deq.idaho.gov/about/regions/north_fork_cda_river_wag/index.cfm)

**To join mailing list:** email [Kajsa.Stromberg@deq.idaho.gov](mailto:Kajsa.Stromberg@deq.idaho.gov)

## Water Quality Assessments

---

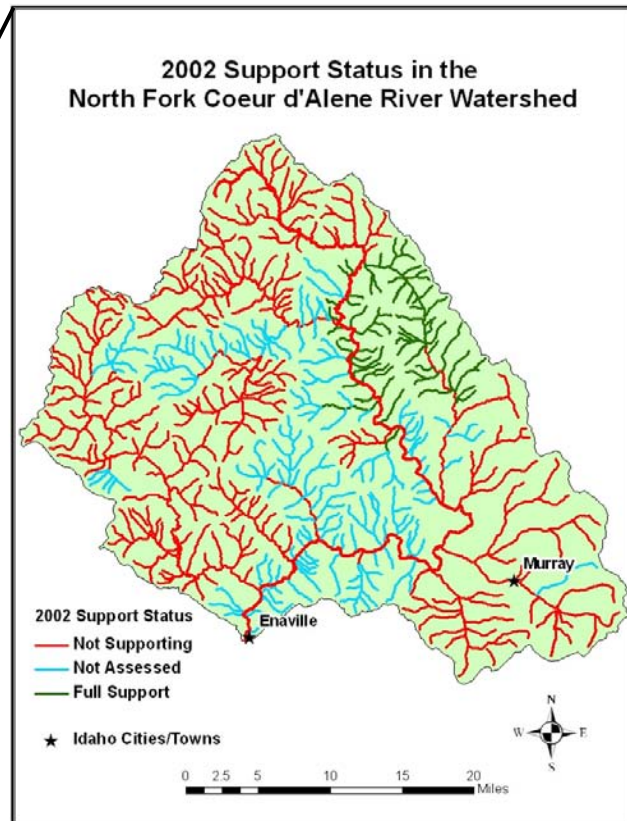
- Status for all streams reported by IDEQ:
  - 1998 303(d) list
  - 2002 Integrated Report (*Most recent approved by EPA*)

### Current Round of Assessments and Reporting

- 2008 Integrated Report (*Draft in development*)
- There will be changes in assessment status for this subbasin

### Water Quality Impairments

- Sediment
- Temperature
- Metals
- pH (*in evaluation*)



## Total Maximum Daily Loads (TMDLs)

---

- Clean Water Act requires development of TMDLs for all water quality impaired streams
- Sediment – Subbasin-wide TMDL completed in 2001 and approved by EPA
- Temperature – TMDLs in development for multiple streams in subbasin
  - Draft TMDL completed by IDEQ State Technical Services Office and recently calibrated to field data
  - Latest draft rec'd 10/18/07
  - Draft ready for WAG review and discussion
- Metals – TMDLs in development for Beaver Creek and Prichard Creek watersheds
  - Draft TMDL completed by IDEQ State Technical Services Office
  - Cadmium, Copper, Nickel, Lead and Zinc
  - Draft undergoing Regional Office review

## Compilation of Data and Reports

---

There is an extensive library of data and reports relevant to water quality in the North Fork Coeur d'Alene Subbasin. Some of the most pertinent today includes:

- Obtained stream temperature data-logger data from US Forest Service (1998-2006)
- Watershed Professionals Network reports are being finalized
  - *Stream Channel Analysis North Fork Coeur d'Alene Subbasin*
  - *Sediment Source Analysis North Fork Coeur d'Alene Subbasin*
  - *Hydrology Analysis North Fork Coeur d'Alene Subbasin*
  - *Summary*
  - Includes inventory of aerial photographs of subbasin
- US Forest Service Analysis of Water Temperature and Fish Habitat Data (2004)
- US Forest Service Site Inspection Report for the Abandoned and Inactive Mines (1998)
  - Vol. 1 and 4 Prichard and Eagle Creek Drainages
- USGS Reports
  - *Stream-Sediment Geochemistry in Mining-Impacted Streams: Prichard, Eagle and Beaver Creeks, Northern Coeur d'Alene Mining District, Northern Idaho (2004)*
  - *Stream-Sediment Geochemistry in Mining Impacted Streams: Sediment Mobilized by Floods in the Coeur d'Alene-Spokane River System, Idaho and Washington (2005)*
  - *Quantification of Metal Loads and Assessment of Metal Sources in Upper Beaver Creek Watershed, Shoshone County, Idaho, May and June 2002 (2003)*
- IDFG report anticipated *Movement, Mortality and Habitat Used of Coeur d'Alene River Cutthroat Trout*
- USFS/Contractor Report anticipated re: *Airborne Thermal Infrared Remote Sensing on the Coeur d'Alene River*