

AREA NAME	DEQ Region	Acres	Square Miles	Popula-tion	Total Samples	Max NO3	Mean NO3	Median	#>= 2.0	%>= 2.0	#>= 5.0	%>= 5.0	#>= 10.0	%>= 10.0	#PWS/ SWA	TREND	SCORE	RANK
TWIN FALLS	TFRO	379834	593	63354	605	41.0	5.20	4.90	536	89	288	48	34	6	88	Increase	24.78	1
ADA CANYON	BRO	211083	330	121063	933	55.9	5.27	4.10	701	75	383	41	108	12	213	Increase	24.75	2
WEISER	BRO	25370	40	7258	99	43.5	12.26	12.00	86	87	78	79	58	59	25	No Change	24.59	3
FORT HALL	PRO	23881	37	1763	8	24.1	14.79	14.80	8	100	7	88	7	88	7	No Change	24.20	4
NE STAR	BRO	2585	4	166	63	48.0	11.14	7.68	42	67	35	56	27	43	1	Increase	23.44	5
MARSING	BRO	6676	11	521	33	37.0	9.57	7.90	21	64	19	56	13	39	12	Increase	21.98	6
GRAND VIEW	BRO	5782	9	510	22	121.0	15.33	9.60	22	100	20	91	11	50	2	No Change	20.55	7
HAGERMAN	TFRO	1071	2	877	8	19.6	9.92	11.00	8	100	5	63	5	63	4	Insufficient	20.45	8
CASSIA CO.	TFRO	193049	302	17525	384	40.0	6.34	5.74	331	86	224	58	65	17	48	No Change	20.32	9
BRUNEAU	BRO	11271	18	23	4	110.0	43.40	31.70	3	75	3	75	3	75	0	Insufficient	19.80	10
LOWER PAYETTE	BRO	26829	42	6718	119	28.0	6.05	4.74	83	70	57	48	22	19	25	No Change	17.70	11
MINIDOKA	TFRO	147501	230	18395	319	83.0	5.35	4.32	224	70	131	41	27	8	56	No Change	17.25	12
ASHTON/ DRUMMOND	IFRO	162473	254	2484	179	48.0	7.03	6.00	159	89	124	69	28	16	18	No Change	16.83	13
MOUNTAIN HOME AFB	BRO	9242	14	8903	36	28.9	7.00	5.41	29	81	20	56	8	22	8	No Change	16.62	14
MOUNTAIN HOME	BRO	1175	2	100	35	40.0	9.96	5.80	29	83	19	54	10	29	4	No Change	16.26	15
CLEARWATER PLATEAU	LRO	359306	561	4236	183	77.1	6.79	3.70	119	65	68	37	39	21	22	No Change	16.25	16
GLENN'S FERRY	BRO	20678	32	1868	11	32.2	9.07	5.72	9	82	8	73	3	27	4	No Change	15.99	17
GRACE/SODA SPRINGS	PRO	317245	496	8042	96	37.2	4.62	3.21	64	67	28	29	8	8	45	No Change	15.59	18
PRESTON	PRO	106721	167	8178	59	30.8	5.15	4.19	40	68	24	41	6	10	23	No Change	15.41	19
BLACKFOOT	PRO	15555	24	1100	15	16.0	6.98	5.64	15	100	9	60	3	20	13	No Change	15.00	20
PURPLE SAGE	BRO	13820	22	2835	87	22.7	5.26	4.61	66	76	38	44	9	10	25	No Change	14.72	21
LINDSAY CREEK	LRO	28296	44	1273	45	18.6	4.74	3.80	25	56	18	40	9	20	16	No Change	14.12	22
MINK CREEK	PRO	1976	6	1478	40	21.0	4.57	2.42	24	60	13	33	8	20	11	No Change	13.85	23
LAPWAI CREEK	LRO	34214	53	1026	16	18.7	5.63	5.19	13	81	9	56	2	13	8	No Change	13.72	24
NOTUS	BRO	2674	4	135	6	10.2	5.76	6.93	5	83	4	67	1	17	0	Insufficient	13.71	25
PARMA	BRO	7057	11	890	17	15.0	4.83	5.36	10	59	9	53	3	18	3	No Change	13.63	26
ST. ANTHONY	IFRO	7693	12	666	14	42.6	9.46	3.29	9	64	5	36	3	21	5	No Change	13.18	27
MUD LAKE	IFRO	80980	127	1309	52	20.0	3.90	2.89	33	63	14	27	4	8	11	No Change	12.41	28
EMMETT NORTH BENCH	BRO	10693	17	887	27	17.0	4.65	3.69	19	70	9	33	3	11	3	No Change	12.15	29
NORTH POCATELLO	PRO	1940	3	4464	11	8.9	4.62	3.80	11	100	3	27	0	0	11	No Change	10.35	30
BLISS	TFRO	6791	11	76	24	8.6	3.19	3.11	16	67	7	29	0	0	0	No Change	8.79	31
HOMEDALE	BRO	5585	9	387	24	16.0	4.67	1.54	12	50	9	38	5	20	1	Decrease	7.90	32

222904

TOTALS 8 3516 288510 3574 2772 1688 532 712

*Number of sample sites within nitrate priority area

TABLE 1. 2008 Ranked Nitrate Priority Areas with Score Components

2008 NITRATE PRIORITY AREAS

25% OF SAMPLES ARE GREATER THAN OR EQUAL TO
ONE HALF THE DRINKING WATER STANDARD FOR NITRATE
Drinking Water Standard for Nitrate is 10 mg/L
mg/L = milligrams per liter

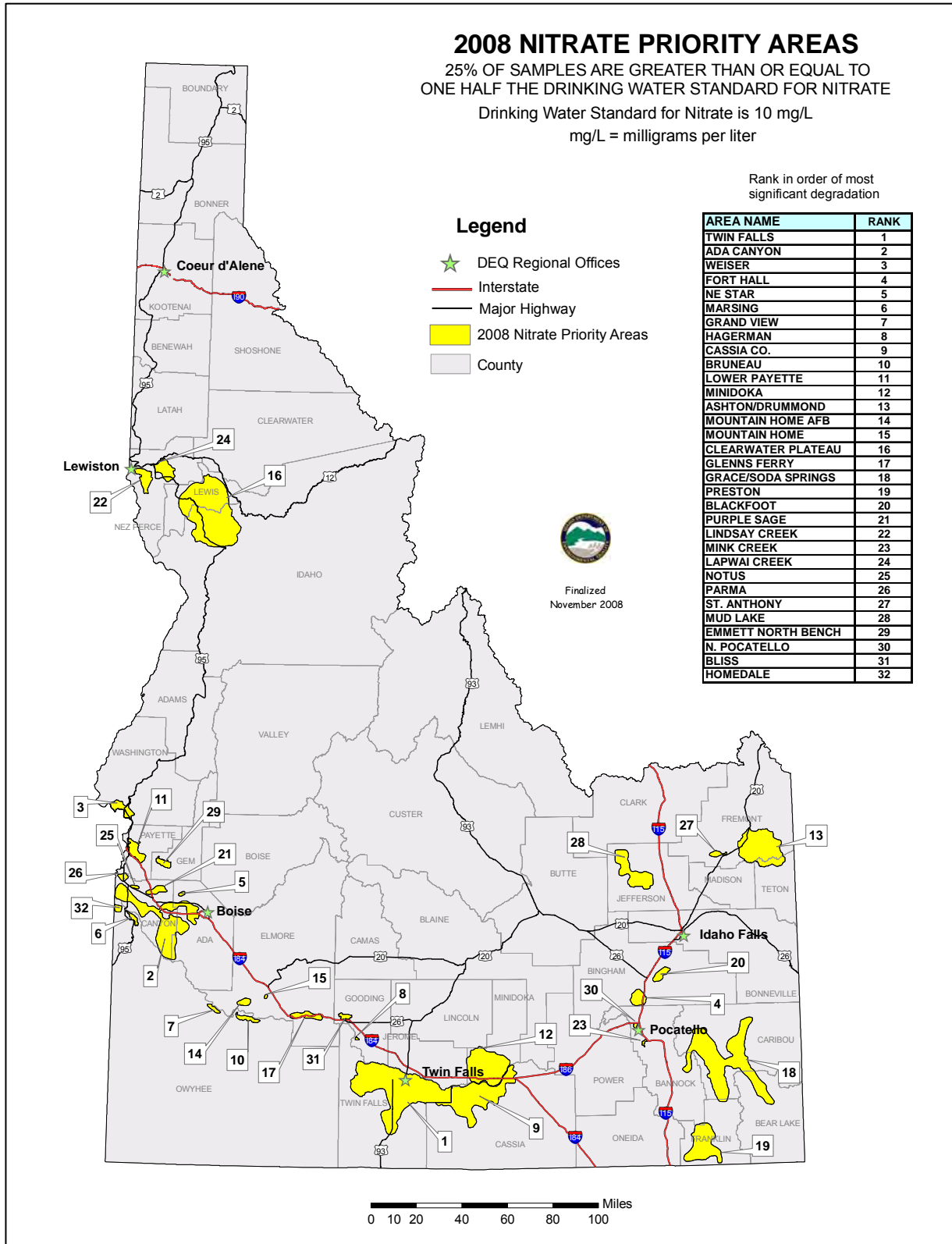


Figure 2. 2008 Nitrate Priority Areas statewide with the ranked list.