

Appendix C

Air Quality Evaluation

of the

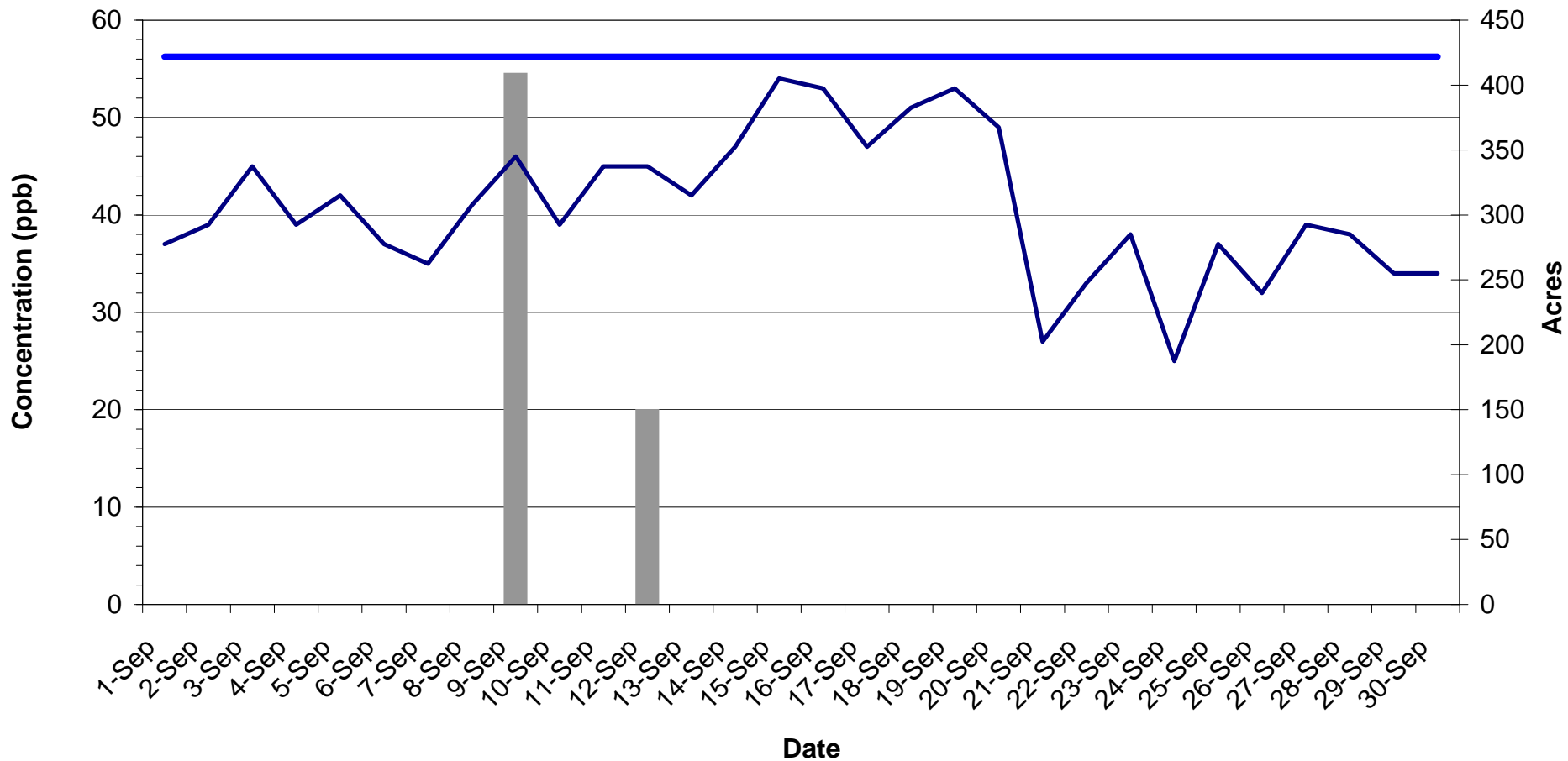
Kootenai County BMA

| Burn Decisions and Acres Burned - Kootenai County BMA | | | |
|--|-------------|-----------------------------|---------------------------|
| Day of Week | Date | # acres approved | # acres burned |
| T | 9/2/2008 | | |
| W | 9/3/2008 | | |
| Th | 9/4/2008 | | |
| F | 9/5/2008 | | |
| Sa | 9/6/2008 | | |
| Su | 9/7/2008 | | |
| M | 9/8/2008 | | |
| T | 9/9/2008 | 407 | 407 |
| W | 9/10/2008 | | |
| Th | 9/11/2008 | | |
| F | 9/12/2008 | 148 | 148 |
| Sa | 9/13/2008 | | |
| Su | 9/14/2008 | | |
| M | 9/15/2008 | | |
| T | 9/16/2008 | | |
| W | 9/17/2008 | | |
| Th | 9/18/2008 | | |
| F | 9/19/2008 | | |
| Sa | 9/20/2008 | | |
| Su | 9/21/2008 | | |
| M | 9/22/2008 | | |
| T | 9/23/2008 | | |
| W | 9/24/2008 | | |
| Th | 9/25/2008 | | |
| F | 9/26/2008 | | |
| Sa | 9/27/2008 | | |
| Su | 9/28/2008 | | |
| M | 9/29/2008 | | |
| T | 9/30/2008 | | |
| W | 10/1/2008 | | |
| Th | 10/2/2008 | 40 | 40 |
| F | 10/3/2008 | | |
| Sa | 10/4/2008 | | |
| Su | 10/5/2008 | | |
| M | 10/6/2008 | | |
| T | 10/7/2008 | | |
| W | 10/8/2008 | | |
| Th | 10/9/2008 | | |
| F | 10/10/2008 | | |
| Sa | 10/11/2008 | | |
| Su | 10/12/2008 | | |
| M | 10/13/2008 | | |
| T | 10/14/2008 | | |
| W | 10/15/2008 | | |
| Th | 10/16/2008 | | |
| F | 10/17/2008 | | |
| Sa | 10/18/2008 | | |
| Su | 10/19/2008 | | |
| M | 10/20/2008 | | |
| T | 10/21/2008 | | |
| W | 10/22/2008 | | |
| Th | 10/23/2008 | | |
| F | 10/24/2008 | | |
| Sa | 10/25/2008 | | |
| Su | 10/26/2008 | | |
| M | 10/27/2008 | | |
| T | 10/28/2008 | | |
| W | 10/29/2008 | | |
| Th | 10/30/2008 | | |
| F | 10/31/2008 | | |
| TOTAL | | 595 | 595 |

Kootenai County BMA

Acres burned and ambient ozone concentration Daily maximum 8-hour average

September 1 - September 30

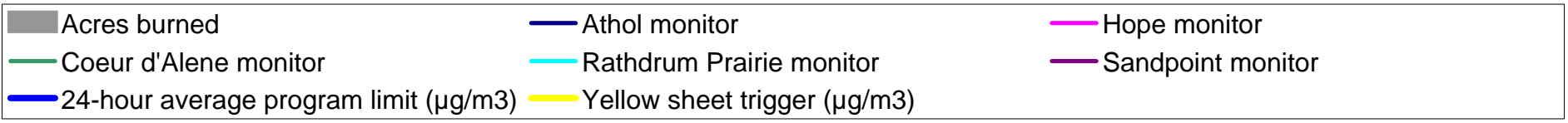
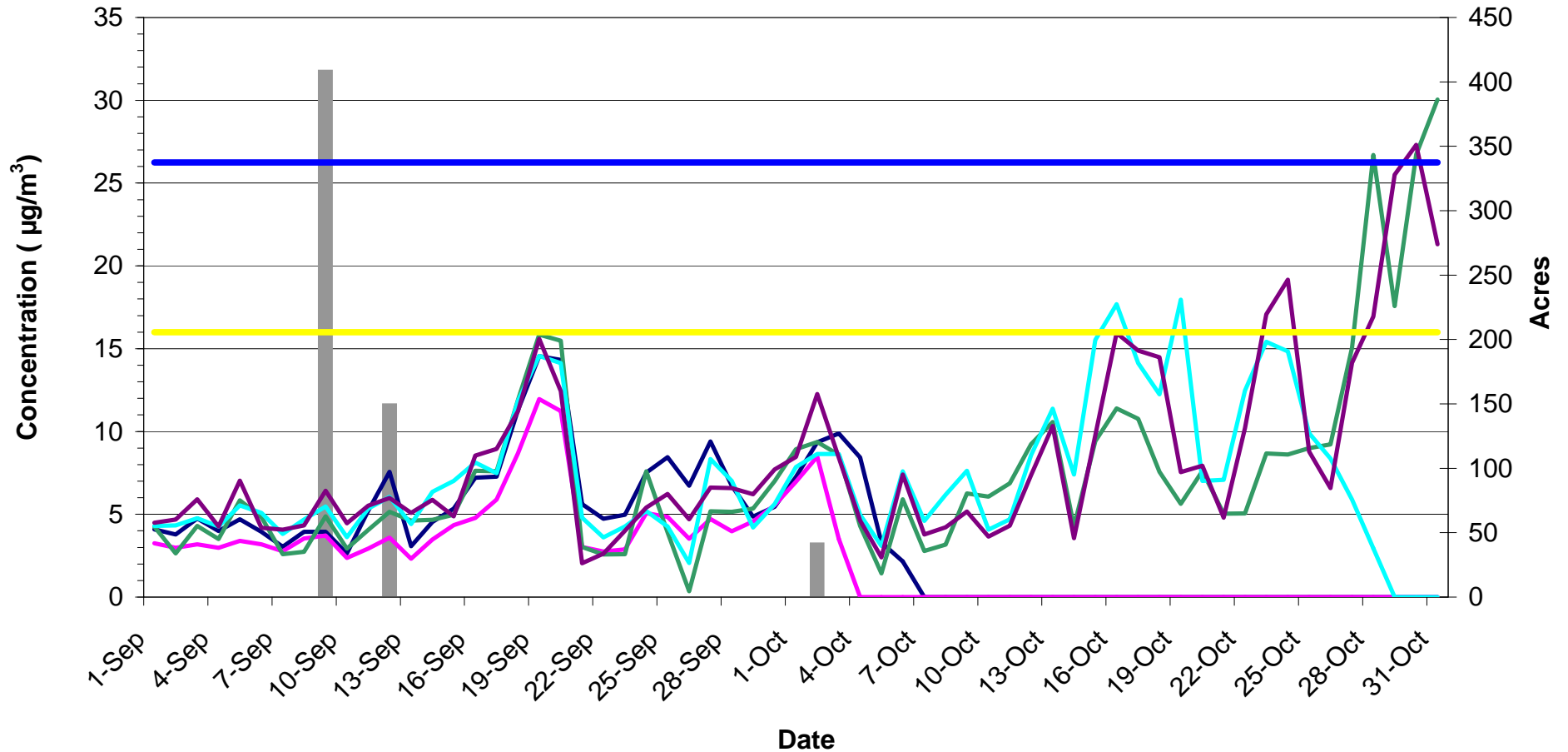


■ acres burned — 8-hour average program limit (ppb) — Lancaster monitor

Kootenai County BMA

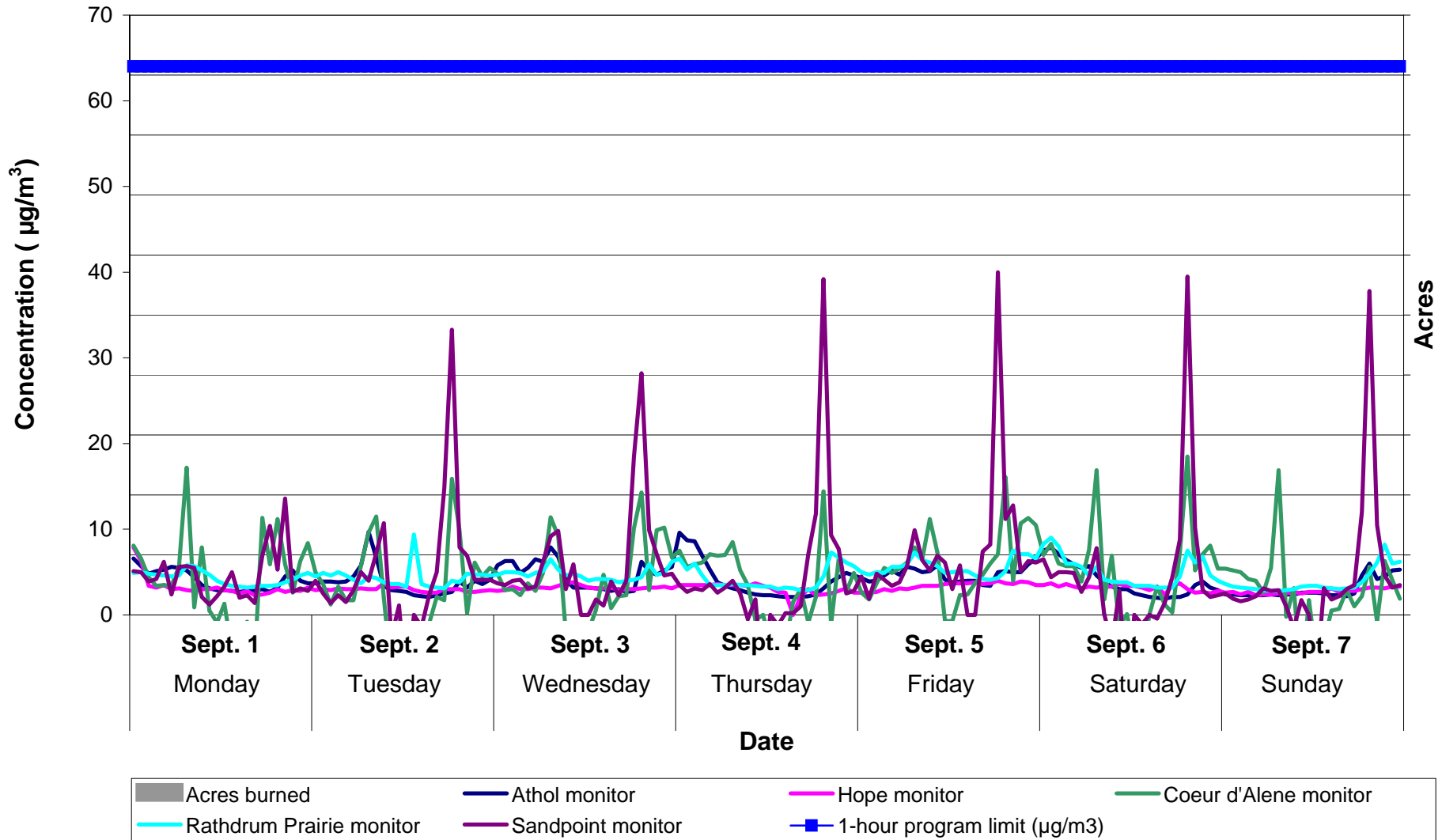
Acres burned and ambient PM_{2.5} concentration 24-hour average

September 1 - October 31



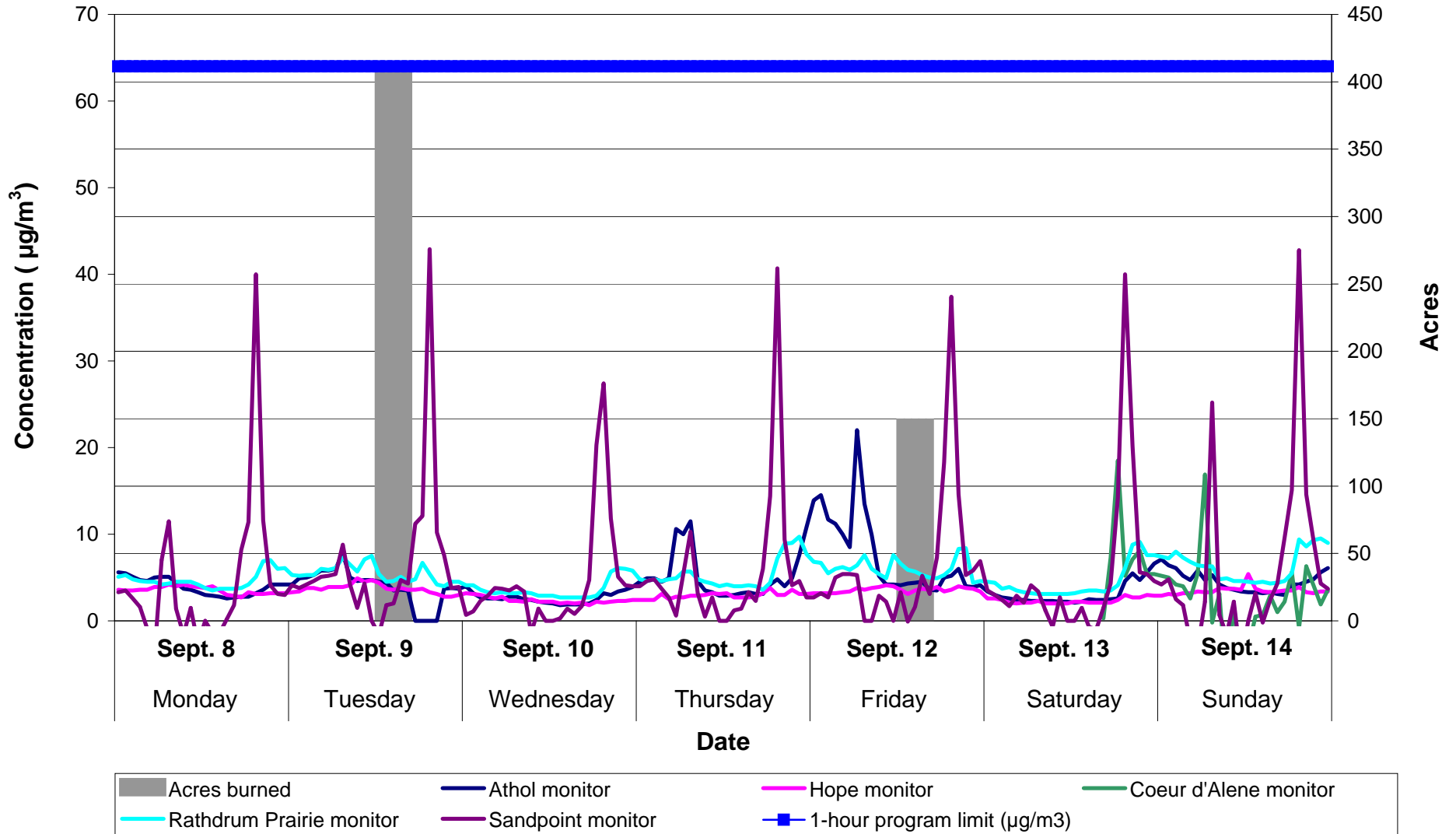
Kootenai County BMA
Acres burned and ambient PM_{2.5} concentration
1-hour average

September 1 - September 7



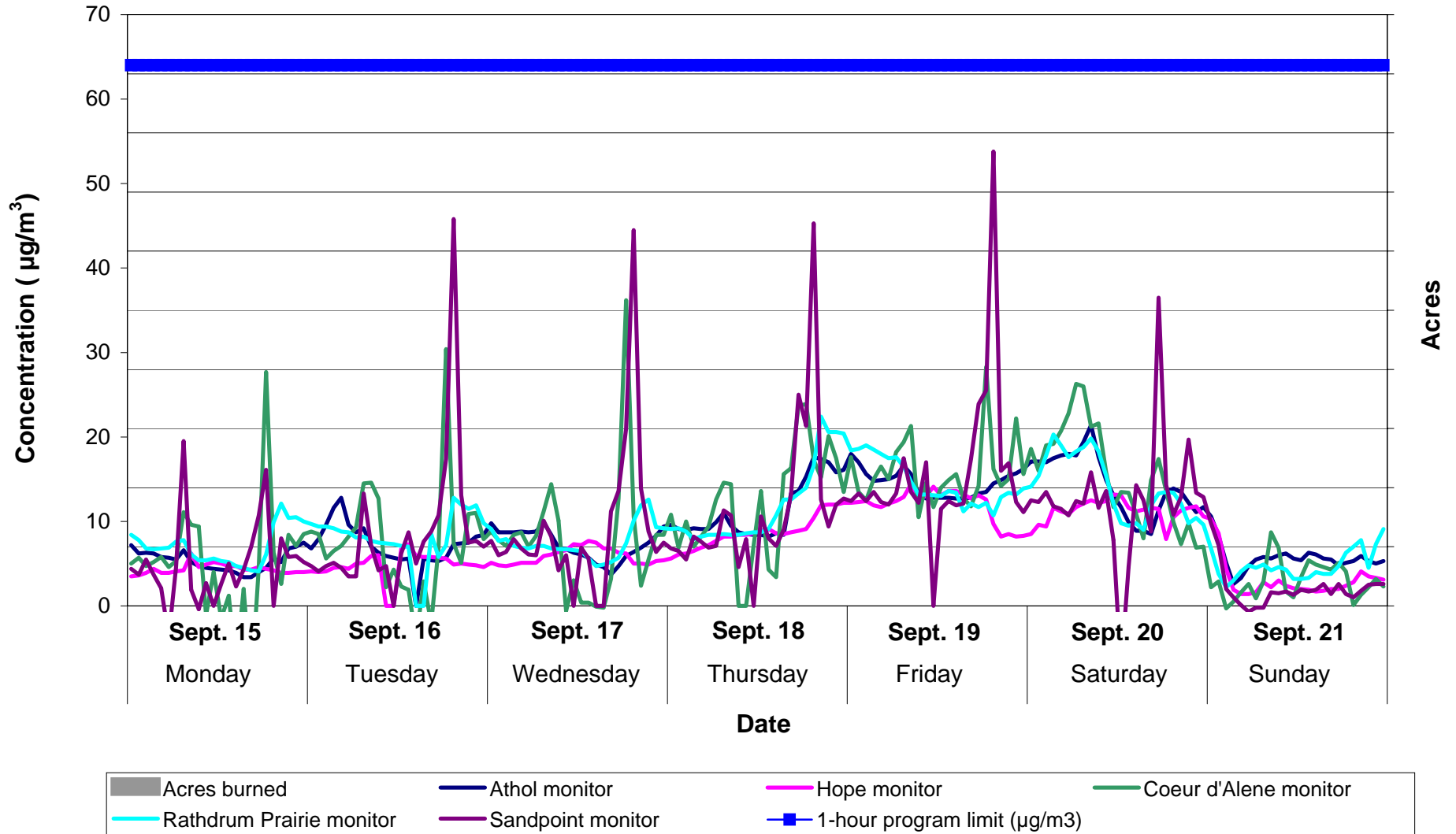
Kootenai County BMA
Acres burned and ambient PM_{2.5} concentration
1-hour average

September 8 - September 14

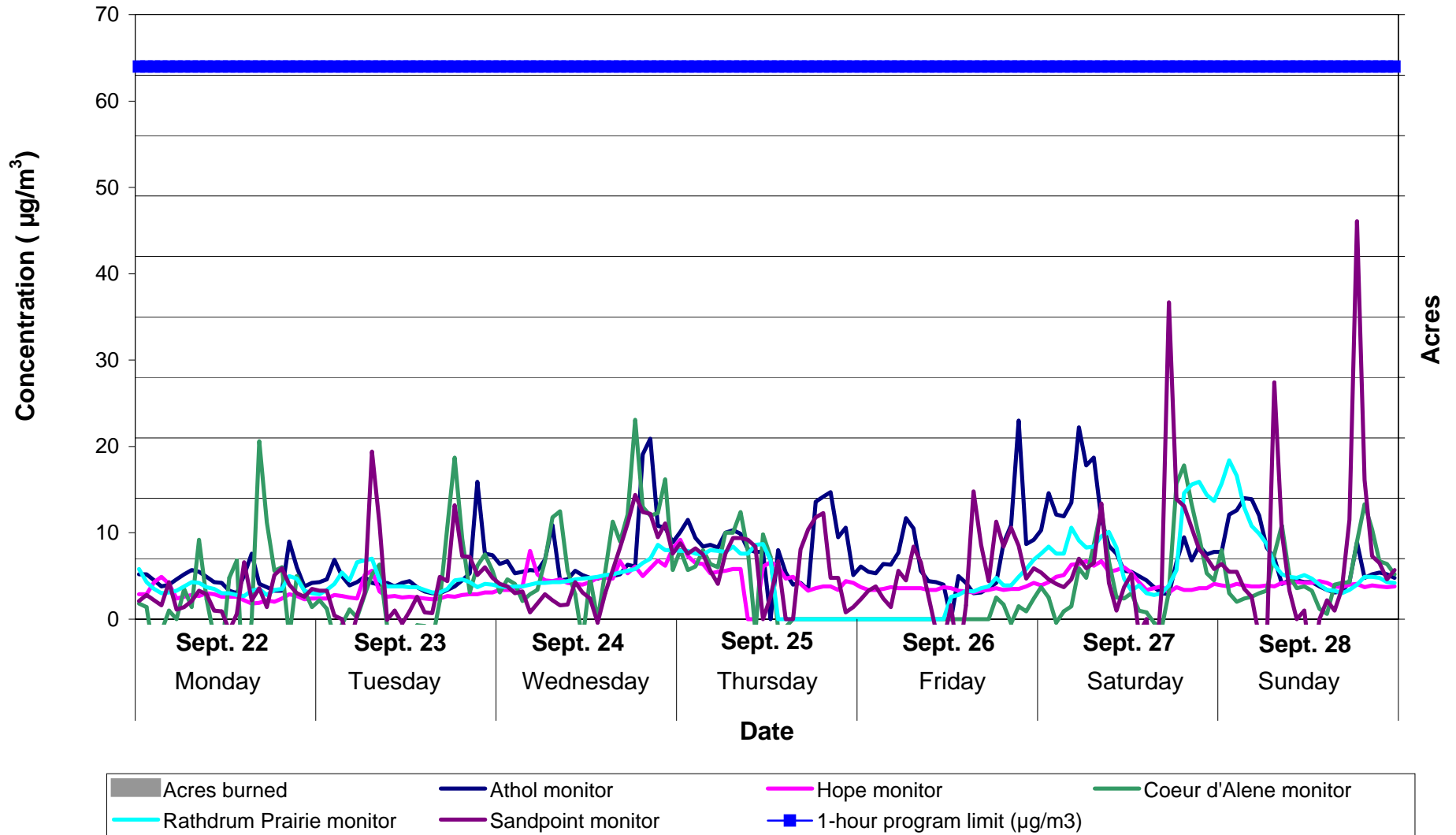


Kootenai County BMA
Acres burned and ambient PM_{2.5} concentration
1-hour average

September 15 - September 21

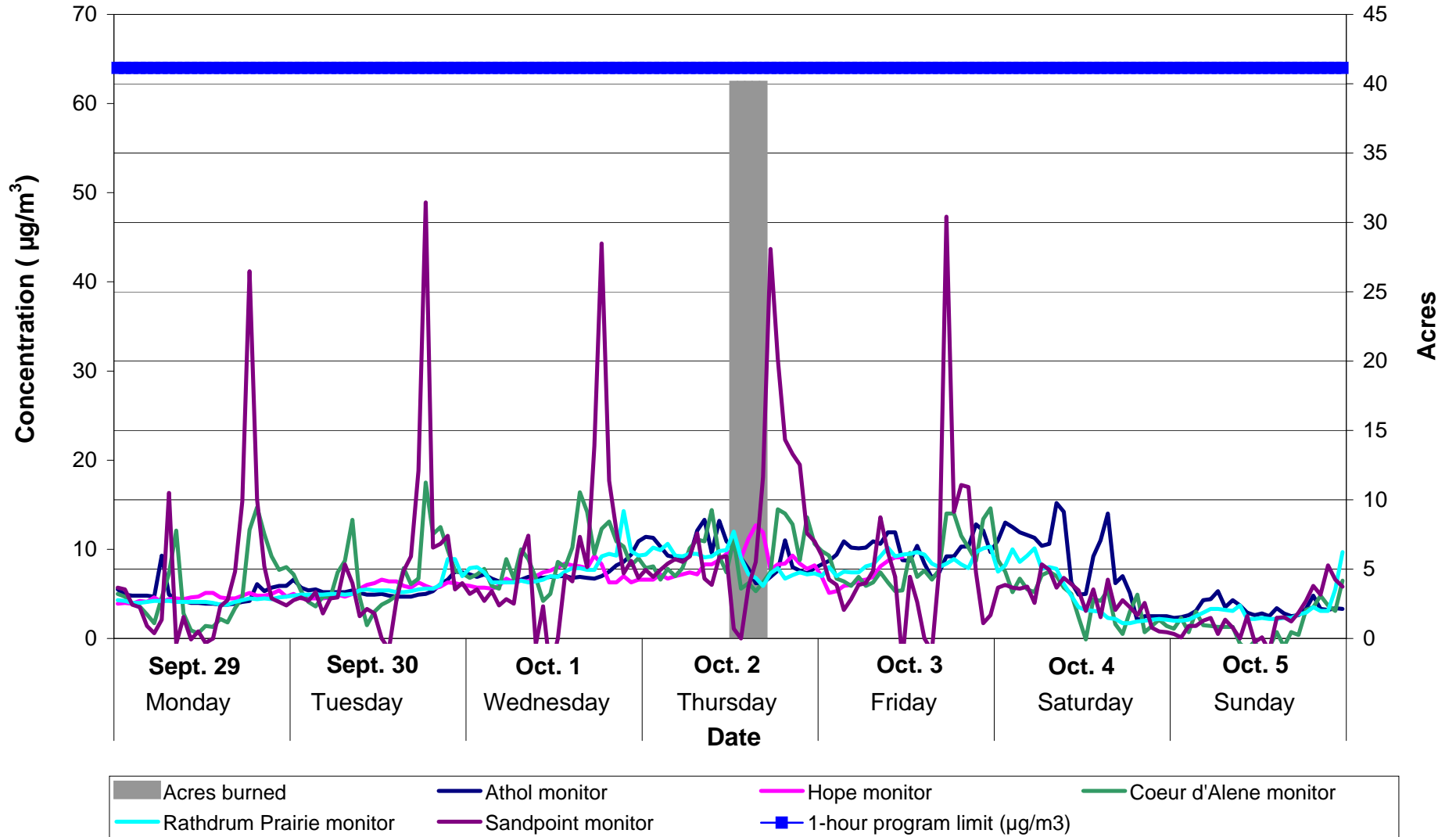


Kootenai County BMA
Acres burned and ambient PM_{2.5} concentration
1-hour average
September 22 - September 28

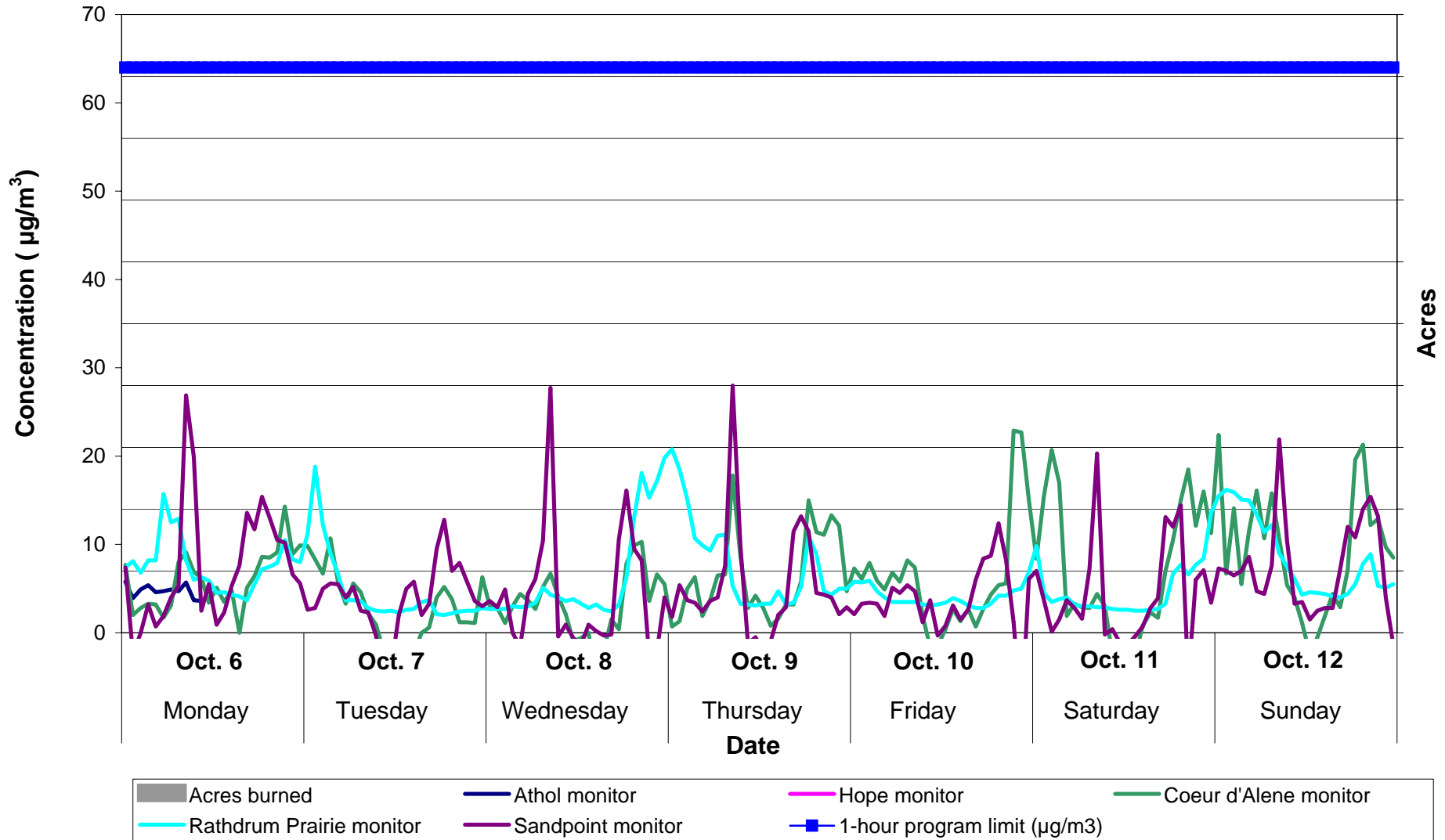


Kootenai County BMA
Acres burned and ambient PM_{2.5} concentration
1-hour average

September 29 - October 5



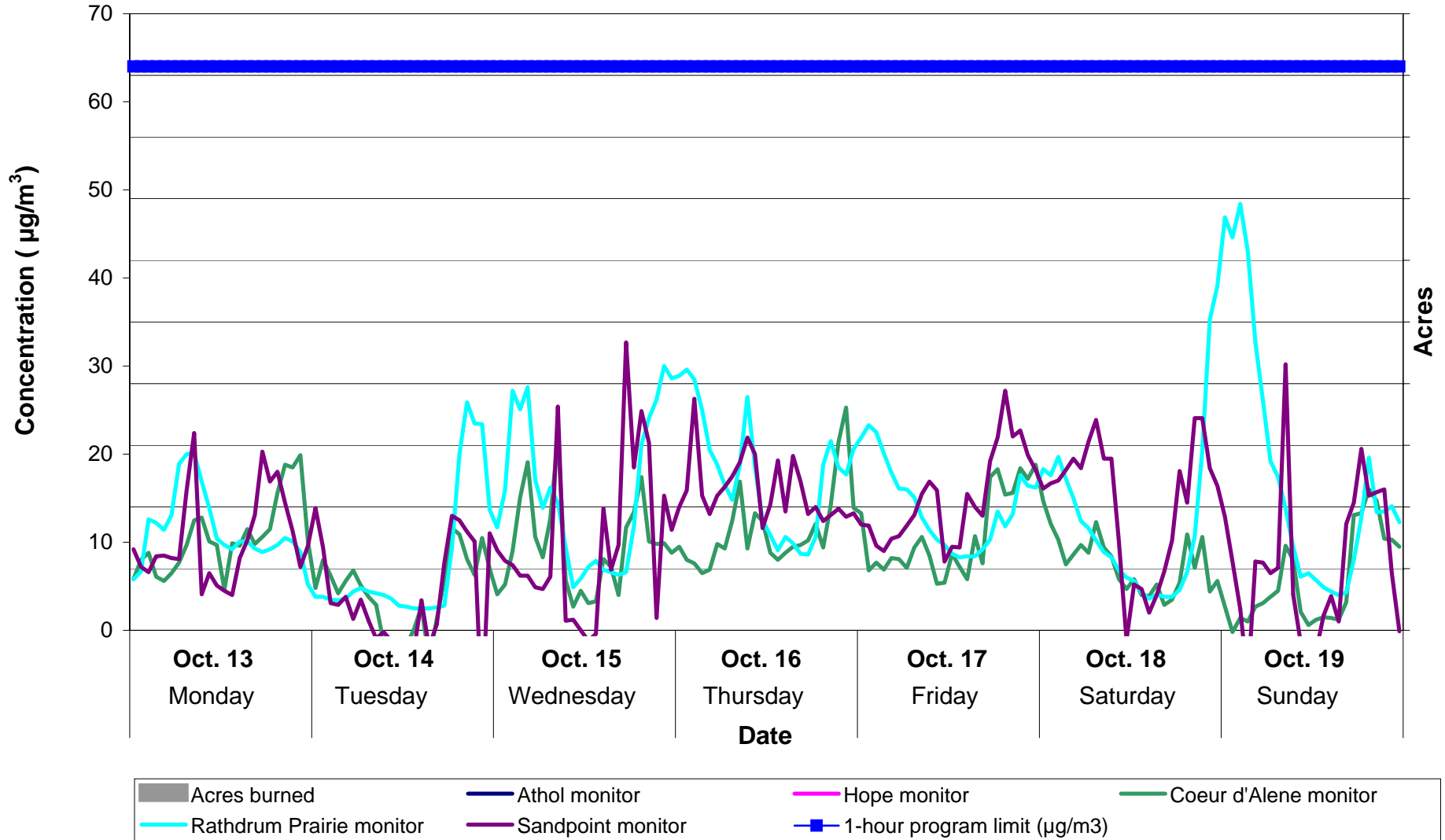
Kootenai County BMA
Acres burned and ambient PM_{2.5} concentration
1-hour average
October 6 - October 12



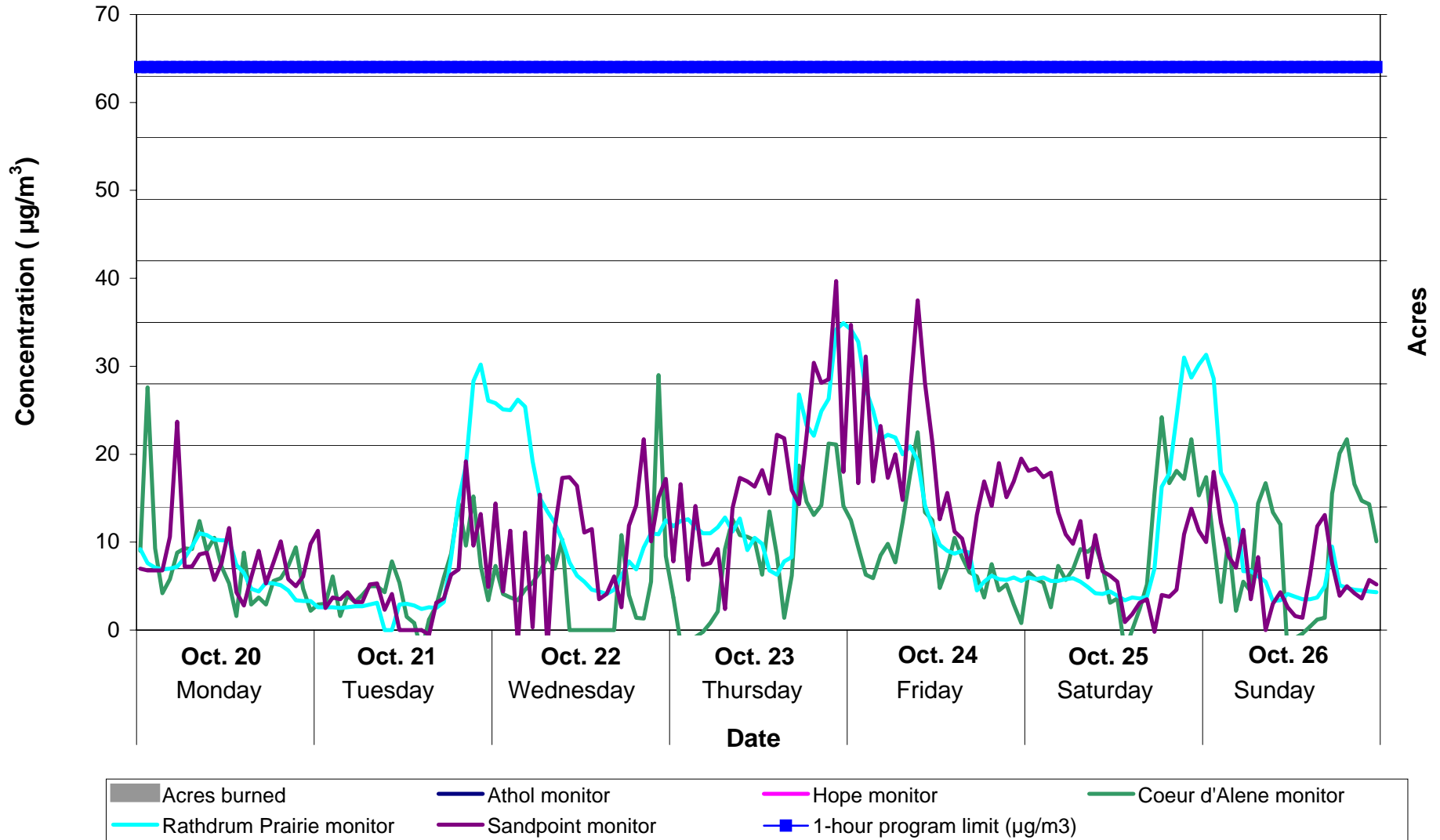
Kootenai County BMA

Acres burned and ambient PM_{2.5} concentration 1-hour average

October 13 - October 19

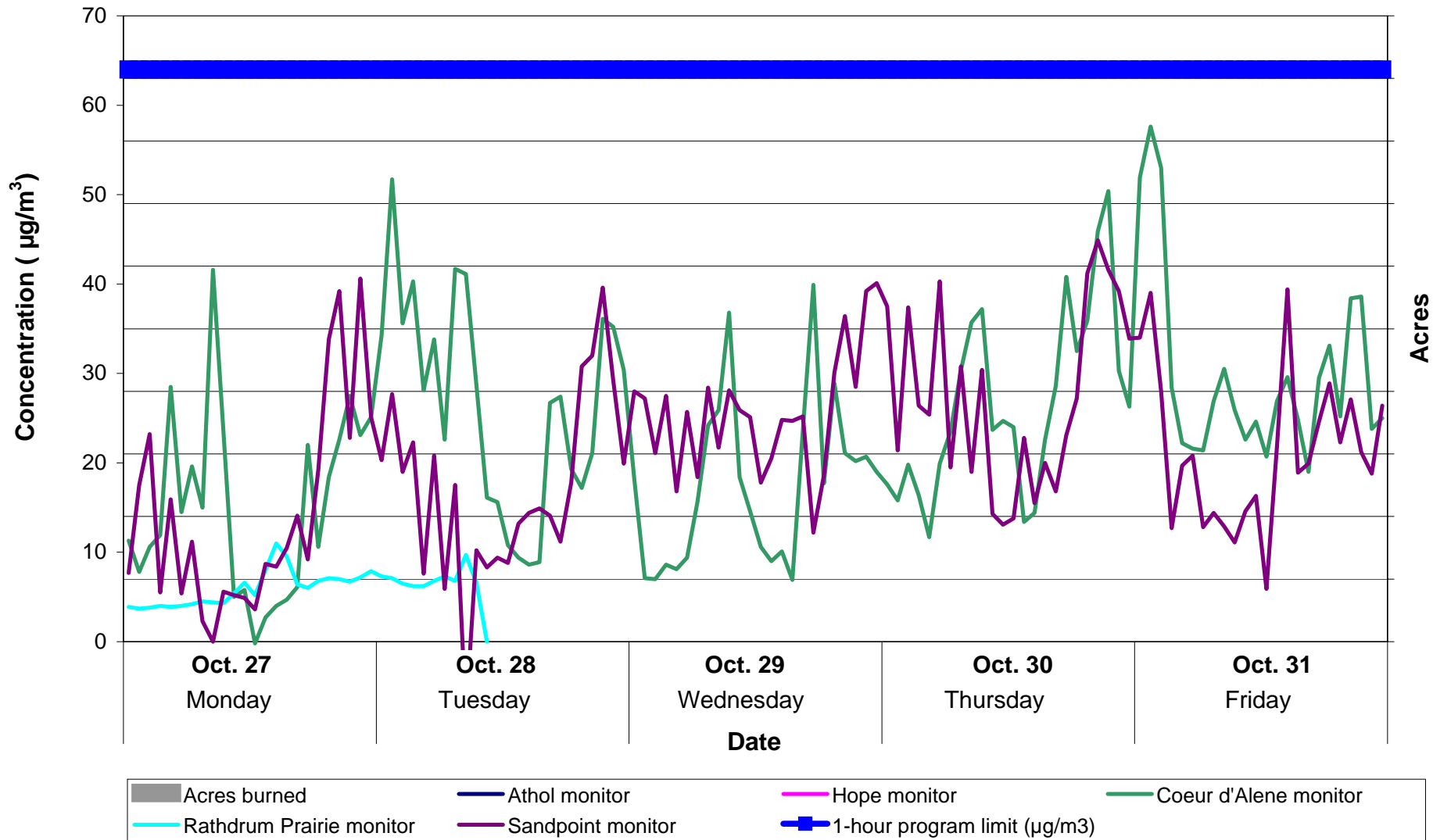


Kootenai County BMA
Acres burned and ambient PM_{2.5} concentration
1-hour average
October 20 - October 26

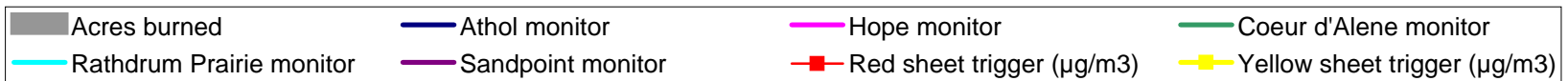
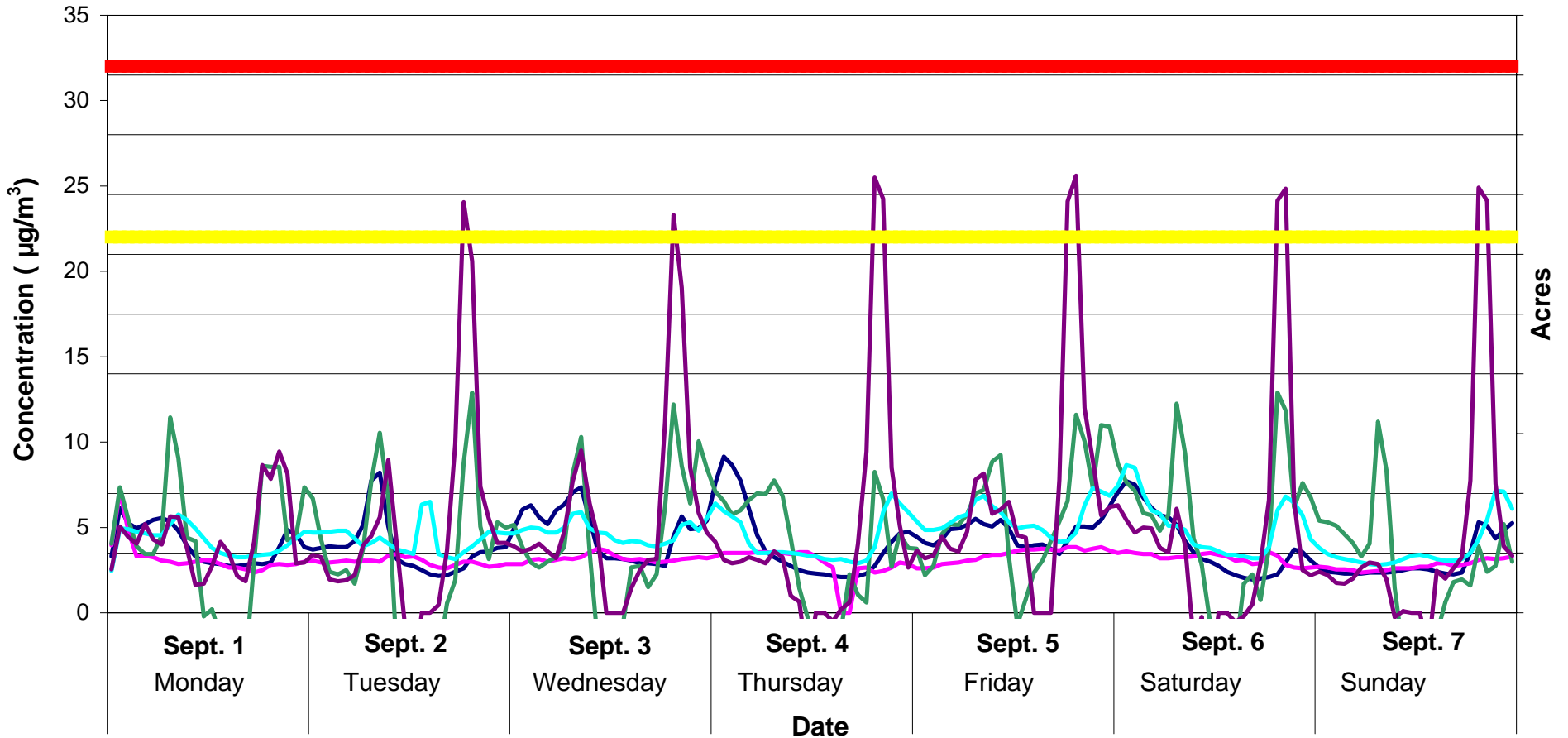


Kootenai County BMA
Acres burned and ambient PM_{2.5} concentration
1-hour average

October 27 - October 31

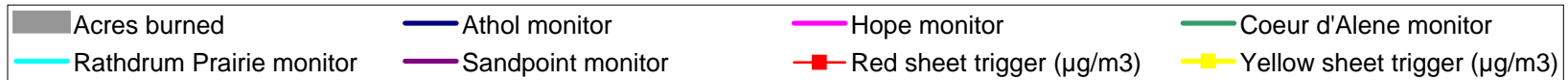
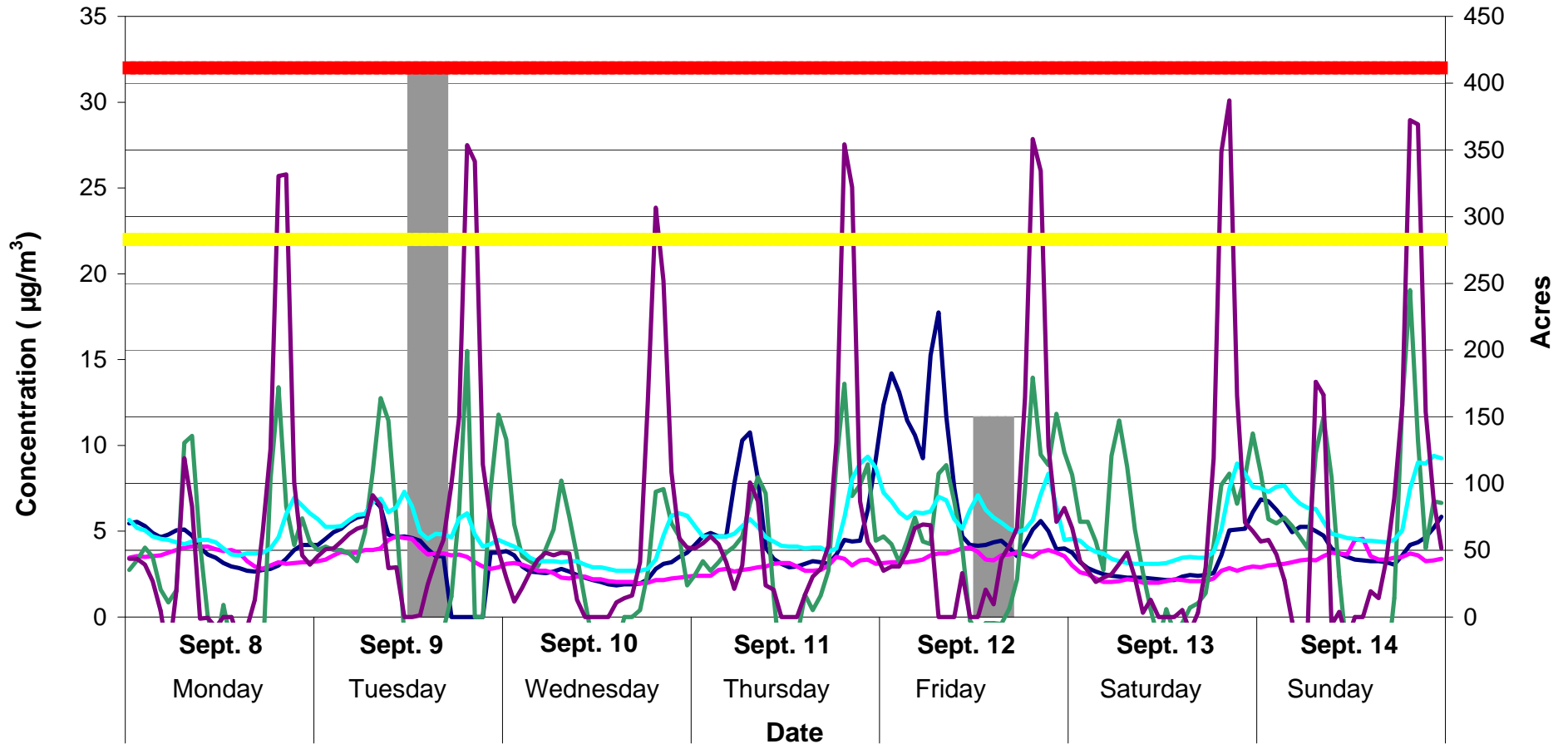


Kootenai County BMA
Acres burned and ambient PM_{2.5} concentration
2-hour rolling average
September 1 - September 7



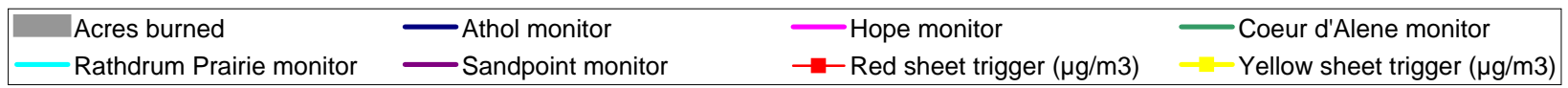
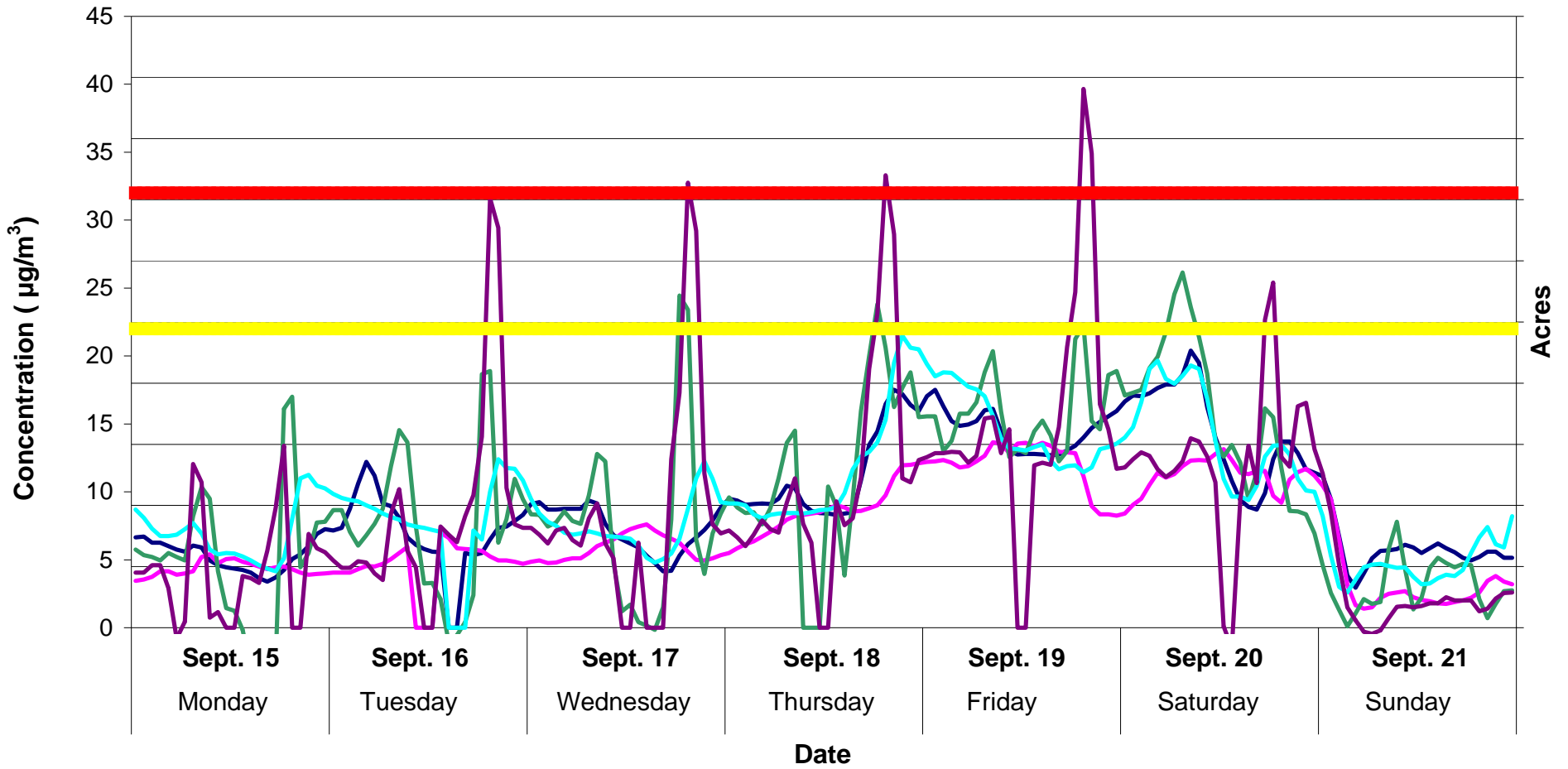
Kootenai County BMA
Acres burned and ambient PM_{2.5} concentration
2-hour rolling average

September 8 - September 14

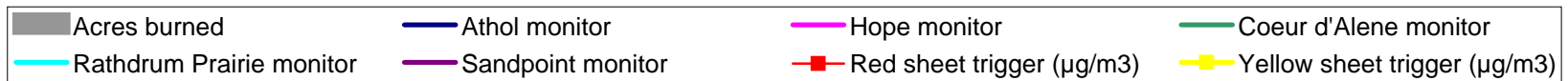
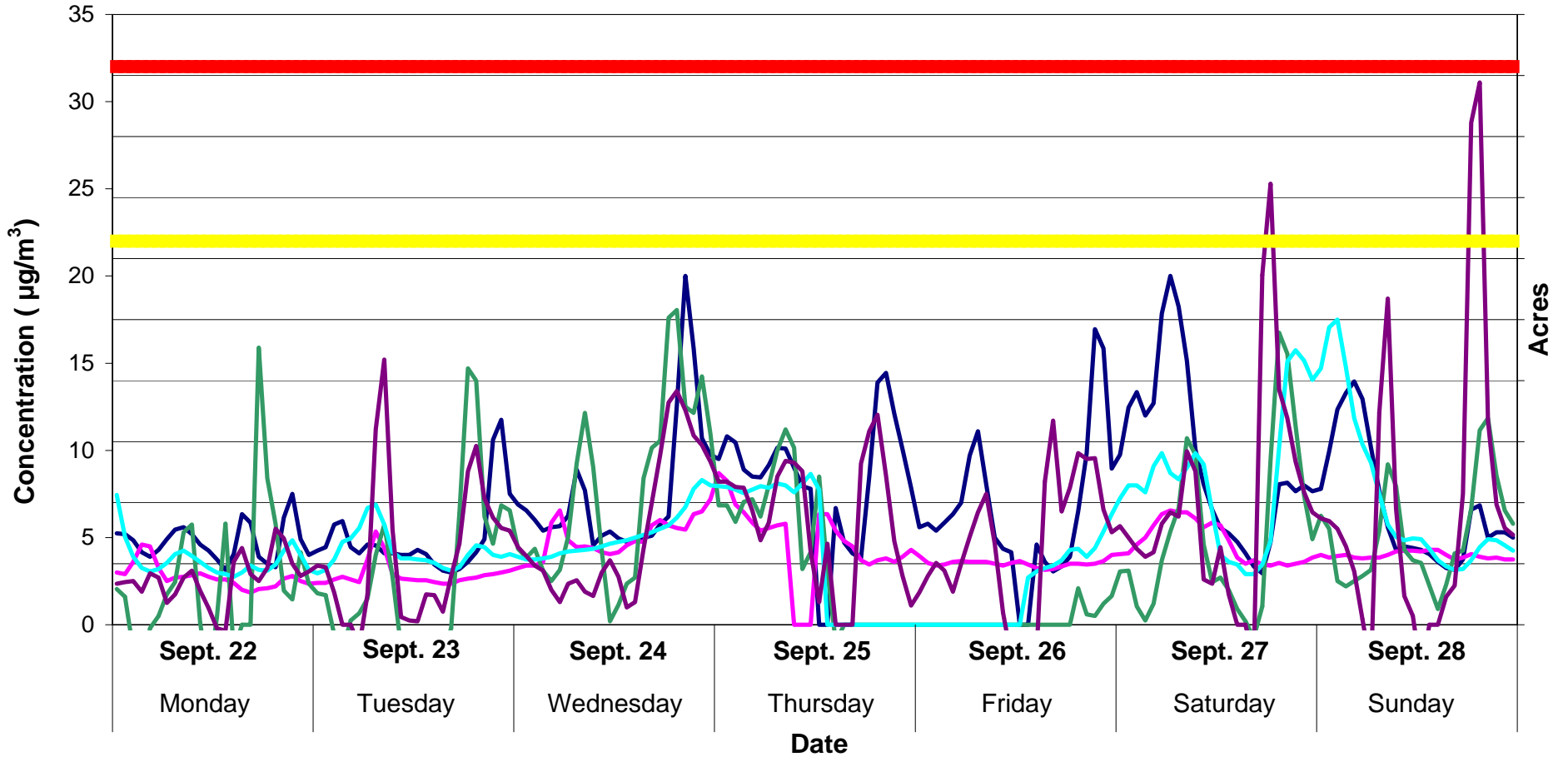


Kootenai County BMA
Acres burned and ambient PM_{2.5} concentration
2-hour rolling average

September 15 - September 21

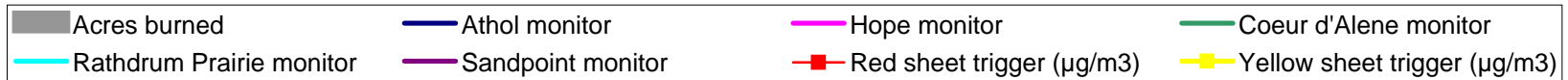
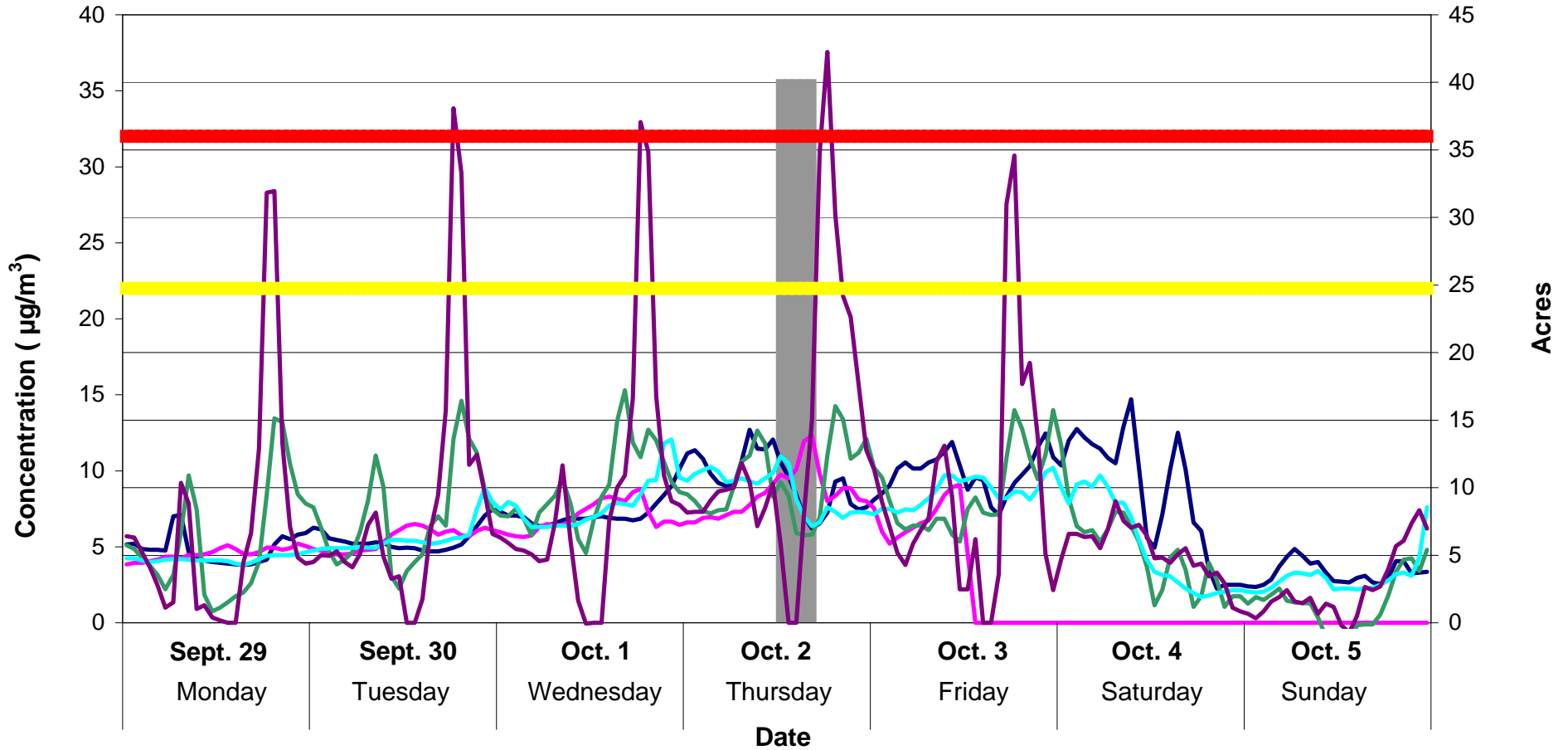


Kootenai County BMA
Acres burned and ambient PM_{2.5} concentration
2-hour rolling average
September 22 - September 28

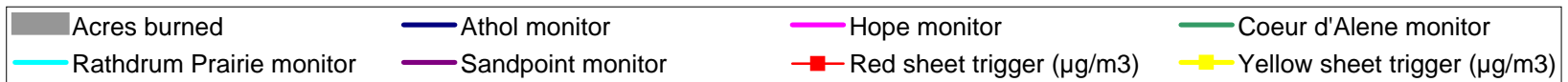
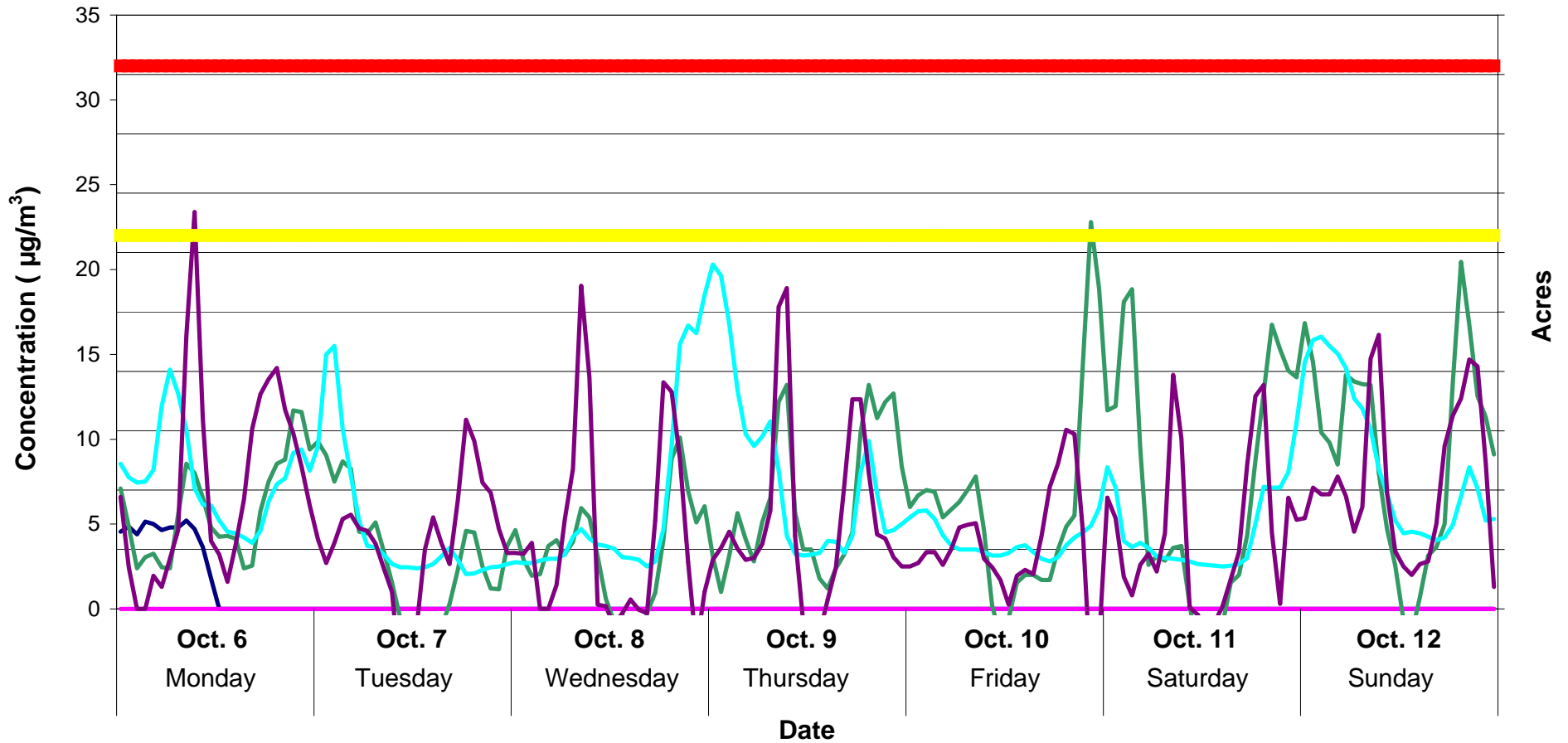


Kootenai County BMA
Acres burned and ambient PM_{2.5} concentration
2-hour rolling average

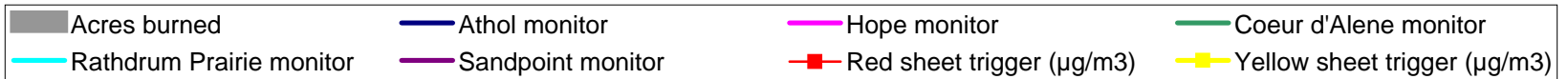
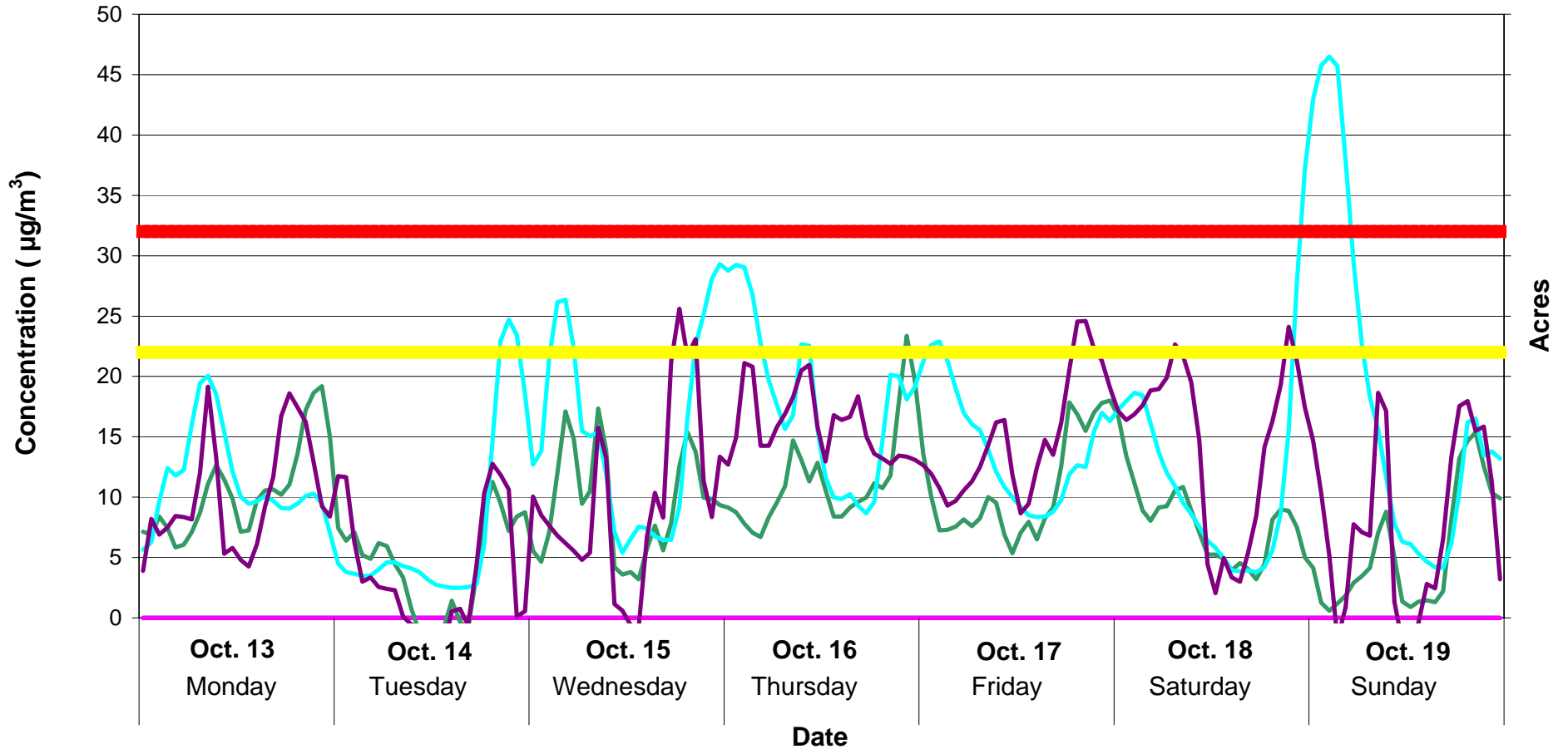
September 29 - October 5



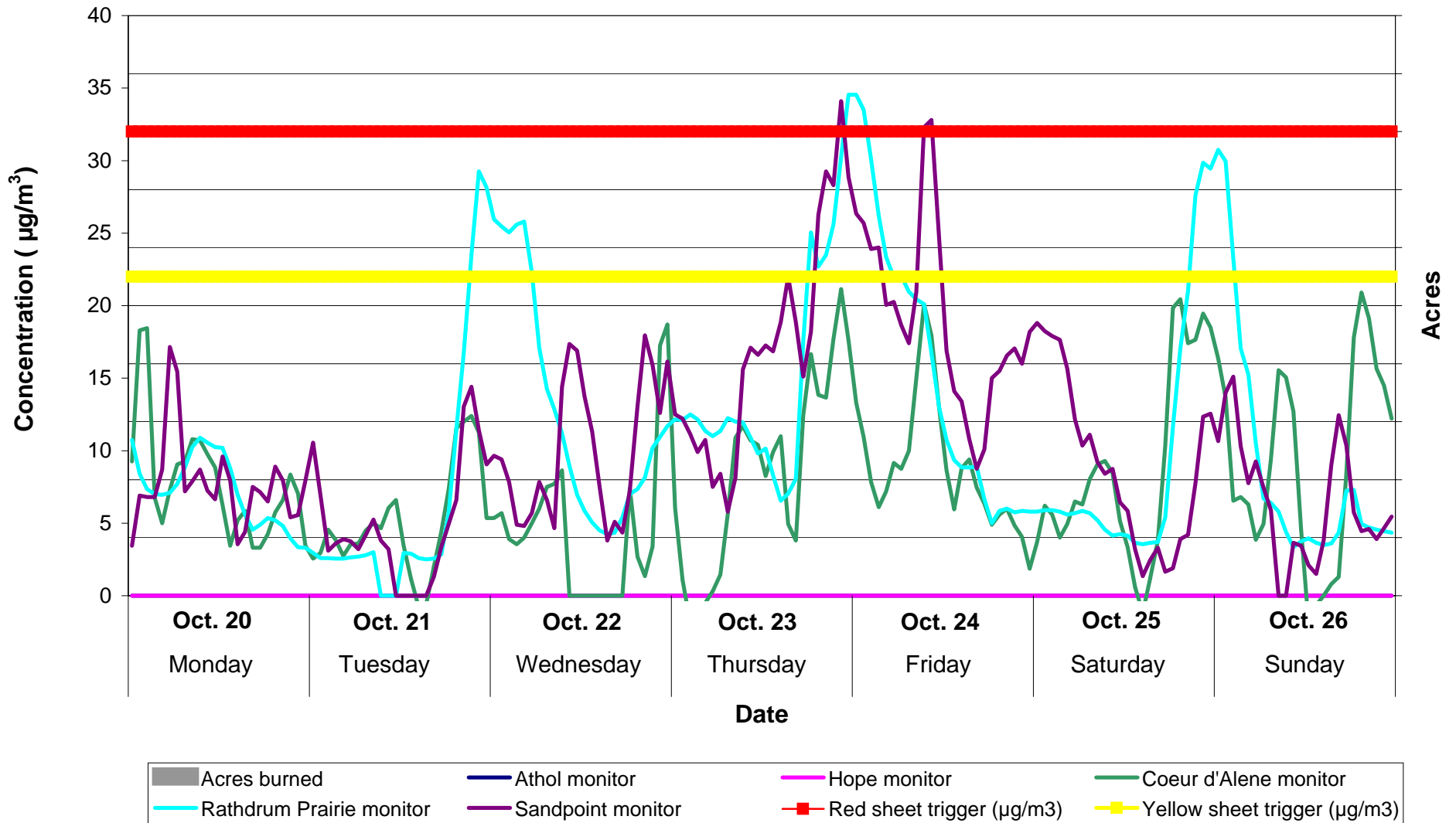
Kootenai County BMA
Acres burned and ambient PM_{2.5} concentration
2-hour rolling average
October 6 - October 12



Kootenai County BMA
Acres burned and ambient PM_{2.5} concentration
2-hour rolling average
October 13 - October 19



Kootenai County BMA
Acres burned and ambient PM_{2.5} concentration
2-hour rolling average
October 20 - October 26



Kootenai County BMA
Acres burned and ambient PM_{2.5} concentration
2-hour rolling average
October 27 - October 31

